



THE WORLD BANK

Strengthening of Social Forestry
in Indonesia Project



Stakeholder Engagement Plan (SEP)

Prepared by
Tim Safeguard

Maret 2025



Indonesia Strengthening Social Forestry Project

Stakeholder Engagement Plan (SEP)

Updated March 2025

1. Introduction

This document presents an overarching Stakeholder Engagement Plan for the Indonesia Strengthening of Social Forestry Project (SSF), prepared by the Ministry Forestry¹ with the World Bank, for support by the Global Environment Fund. The SSF Project objective is to improve access to forest land use rights and community management in selected priority areas allocated for social forestry. The objective would be achieved by providing technical assistance to communities, the GOI, and non-government and community organizations serving as facilitators of social forestry, formalizing land use rights, and supporting activities to restore priority degraded forest lands and improve livelihoods, while generating valuable knowledge and lessons to contribute to the national Social Forestry Program.

The Social Forestry Program provides an opportunity for the GOI to engage communities and smallholder farmers in its agrarian reform program and in biodiversity conservation efforts. By providing use rights to severely degraded forest land to communities, the Program helps reduce the drivers of biodiversity loss by: (i) supporting sustainable community-based forest management to increase forest cover, which in turn provides biodiversity dispersal or corridor benefits; and (ii) promoting forest-based micro and small enterprise development to improve livelihoods of forest dependent communities, thereby reducing conversion pressure on intact forest habitats. Examples of micro and small enterprise development support for social forestry enterprise groups with permits in forest areas include plantation and processing of timber and NTFP, micro-hydropower, eco-tourism, including necessary extension and technical assistance for market analysis, quality control, packaging etc., as relevant and on a site-by-site basis. To achieve the project objectives, project components are established and consistent with Indonesia's Sustainable Landscape Program and One Map Policy.

The SSF Project was approved by the World Bank Board on May 22, 2020, the Grant Agreement was signed by the GoI on June 17, 2020, and became effective on September 15, 2020. The Directorate General of Social Forestry of MoFor leads the project implementation in collaboration with Provincial Forestry Agencies across six districts and ten Forest Management Units (FMUs, decentralized units for forest landscape management at the provincial level) within four provinces: Lima Puluh Kota District, in West Sumatra Province; South Lampung District, in Lampung Province; Dompu District, Bima District and Bima City, in West Nusa Tenggara Province; and West Halmahera District, in North Maluku Province. The Project consists of three main components:

Component 1. Policy and Institutional Strengthening to Support Social Forestry

This component aims to create an enabling environment for the success of the development and strengthening of social forestry in Indonesia, and to create opportunities for increasing

¹ The Presidential Regulation named as Peraturan Presiden no 175 published in the year 2024 announced the establishment of the Ministry of Forestry and appointed the Ministry as a legal body to organize governance in forestry. The Regulation separated the organization of Ministry Forestry from the organization of Ministry Environment. For the purpose of developing SEP and or developing Design Document this Regulation will be applied accordingly.

the scale of activities in the future. There are 3 (three) sub-components under Component 1.

Sub-component 1.1 Policies and Regulations

This sub-component aims to support the MoEF Social Forestry Program in developing and harmonizing relevant policies, regulations and procedures which accelerate and facilitate the implementation of the Social Forestry Program. Its main activities include:

- (i) Supporting village and district development planning process and relevant policies and guidelines;
- (ii) Strengthening the policy framework for sustainable funding (e.g. fiscal decentralization, microfinance); and
- (iii) Strengthening policy framework for community-based enterprises.

Sub-component 1.2 Institutional Strengthening

This sub-component aims to develop institutional capacities at various levels of government that are appropriate for promoting Social Forestry Program activities consistent with the proposed project objectives. This will enable sustainable management of forest resources by users while providing income-generating opportunities. Its main activities include:

- (i) Additional support for the operationalization of the Social Forestry Task Force;
- (ii) Additional support for grievance redress and conflict resolution mechanisms;
- (iii) Supporting the formation of village institutions, farmer groups, and customary institutions;
- (iv) Strengthening the institutional framework to accelerate the issuance of land use rights for village institutions, farmer groups and customary institutions; and
- (v) Strengthening existing technical support (e.g. community facilitators) for forest-dependent communities; as well as knowledge management and technical assistance.

Sub-component 1.3 Knowledge Management and Technical Assistance

This sub-component is expected to generate learning from social forestry in Indonesia and draw lessons from other countries' experience to contribute to the achievement of project objectives and for the Social Forestry Program. The sub-component is also expected to assess and address capacity requirements at the government and community levels for the implementation of an effective Social Forestry Program, including by supporting the creation of social forestry networks and strengthening community-based micro and small enterprises. Its main activities are supporting knowledge management and technical assistance.

Component 2: Social Forestry development and strengthening

This component aims to support the implementation of an effective and efficient Social Forestry Program. Targets will be achieved through the following three sub-components:

Sub-component 2.1 Management Plan

This sub-component functions to facilitate and provide the community with technical assistance in formulating a sustainable forest management plan. Its main activities include:

- (i) Supporting the mechanism for transferring land use rights to the community;
- (ii) Mapping and installing boundary stake and land zoning for various uses;
- (iii) Developing village forest management plan and management of farmer groups; and
- (iv) Implementation of the above-developed management plan.

Sub-component 2.2 Development and Implementation of Community Investment

The proposed project will support the development and/or strengthening of small and micro enterprises in the community in accordance with the management plan described above. The main activity in this sub-component is to develop and run a number of priority investments according to the management plan.

Sub-component 2.3 Development of Community-based Small-Micro Enterprises

This sub-component will promote community access to business financing schemes. The main activity is the development of community-based micro-enterprises. The proposed sub-component will support community/farmer groups in implementing the management plan developed above; develop and encourage investment in economic activities as priority livelihoods according to the management plan prepared with project support in sub-component 2.1 through community grants.

Component 3: Project Management and Monitoring and Evaluation

This component aims to ensure effective and efficient implementation of project activities to achieve project objectives. Its main activities cover the following:

- (i) Project management (e.g. fiduciary management, safeguards, etc.); and
- (ii) Monitoring and Evaluation.

2. Objective/Description of SEP

The overall objective of this SEP is to define a program for stakeholder engagement, including public information disclosure and consultation throughout the entire project cycle. The SEP outlines the ways in which the Directorate General of Social Forestry of MoFor will communicate with stakeholders and includes a mechanism by which people can raise concerns, provide feedback, or make complaints about the project and any activities related to the project. The SEP specifically emphasizes methods to engage groups considered most vulnerable and that are at risk of being left out of project benefits.

3. Stakeholder identification and analysis

Stakeholder identification and analysis had been carried out during project preparation and engagement has been implemented to date. This section provides the updated stakeholders and analysis based on the project implementation in the last four years. The list of updated stakeholders is presented as an Annex 1 to this SEP.

a. Community forest users and dwellers including Indigenous Peoples and Local Communities (IPLCs)

IPLCs are stakeholders who are highly dependent on forest resources. To IPLCs, forests are not only a provider of agricultural land but also a hunting ground and place to find staple needs such as water, timber, firewood, medicinal plants and various types of food. In fact, in some communities, forests also serve cultural and religious functions. Within the IPLCs as a category, various interest groups can be found, among others:

- Forest farmers: a community group that uses forest land to grow crops. In the past, farmers used the forest land to grow crops in a variety of ways, but nowadays many forest lands are used for the cultivation of commercial crops e.g. oil palm, coffee, rubber, etc.
- Harvesters, collectors or pickers of non-timber forest products such as honey, rattan, jelutung, and so on.
- Community groups that use water and water energy.
- Women's' groups
- Other vulnerable groups.

These people may form or be part of the groups formed as the Social Forestry Business Group (DFBG or 'KUPS') to run businesses in the field of social forestry. The Project ESMF and IPPF (Indigenous Peoples Planning Framework) provides more detail on the IP identified at each project location. Strategies to engage each of these groups will vary depending on local characteristics, needs and preferences, but options are set out in the engagement techniques table in this SEP.

b. Village Government

A village is the lowest level of government administration in the Republic of Indonesia. Based on Law No. 6 of 2014, the village has the authority to regulate and manage government affairs, interests of the local community based on community initiatives, and origin rights or customary rights. A village, in this instance, a village government under Law No. 6 of 2016, has the task to carry out village development, and village community development and empowerment. One of the main challenges in village community development and empowerment are the increased disparity in agrarian resources control and environmental degradation in the countryside. Social Forestry is one of the answers to the problems occurring in the village. Therefore, the Village Government is one of the key actors involved in the Social Forestry Program.

With the granted authority in managing Village Funds by mandate of the Village Law, the Village Government is expected to contribute to institutional strengthening and Social Forestry funding, including incorporating forestry management activities into the Village Medium-Term Development Plan. Likewise, the Village Government can encourage village-owned enterprises to become partners in marketing the village products.

c. Regional Government

Upon the New Law UUCK No. 11/2021 has issued, The Ministry of Environment and Forestry / KLHK issued P No. 9/2021 on Social Forestry. The Ministry regulates roles of the government concerning Social Forestry states that the Central Government and Regional Government (Provincial and the District) have the task of facilitating the holders of Social Forestry permit. The facilitation includes assistance in the application phase, institutional strengthening, capacity building including business management, cooperative establishment, working area boundary setting, preparation of a village forest management plan, a business and annual

work plan, design of forestry partnership activities, financing, post-harvest, business development, processing technology, business training, market access, and even promotion through various events. In addition, the Provincial Government can concretely contribute to initiating Regional Regulations on Recognition of Indigenous Peoples, or at District Government level, through the District Head Decree on Recognition of Indigenous Peoples. The Ministry is supported by the organization of Balai PSKL that represents administration structure at several regions, including in Sumatera, Kalimantan, Sulawesi, Maluku and Papua, Bali Nusa Tenggara dan the region of Java.

These contributions are in line with the role of the District Government stipulated in Law No. 23 of 2014 concerning Regional Government. It states that in the field of community and village empowerment, the District/City Government is authorized to establish village governance (*penataan desa*); facilitation for collaboration between villages in the same district; and coaching and supervision for village government administration. The same thing is also stipulated in the Village Law, that the District/City Government is obliged to provide guidance and supervision over the implementation of the village governance. This includes facilitating, fostering, and supervising the village governance; and making efforts to accelerate rural area or village development through financial support, coaching, and technical assistance.

In the context of implementing village governance, Social Forestry is clearly a part of village development which aims to improve the welfare and wellbeing of rural communities and reduce poverty through meeting basic needs, building village facilities and infrastructure, developing local economic potentials, and utilizing the natural and environmental resources in a sustainable manner.

d. Central Government

At Central level of Government, the Ministry of Forestry has the authority in Social Forestry. The Ministry issues license and legalizes them, verifies the document on SF and conducts site verification. The Ministry has important mandate to develop livelihood of communities by securing food and energy for future.

With this authority, the Ministry of Forestry shall take a lead in coordinating and join collaborating with other Ministries namely the Ministry of Environment, the Ministry of Village, the Ministry of Agriculture and collaborates with the Coordinating Minister of Food.

e. Forest Management Unit (FMU)

Forest Management Unit (FMU) is a site-level institution with the aim of ensuring certainty and realization of economically, socially, ecologically sustainable forest management. As the site-level institution, FMU is the executor of operational and/or technical activities supporting the local agencies in the field of forest management within the designated FMU working area. FMU has functions including implementing forest management activities in its working area, starting from planning, organizing, implementing as well as monitoring and controlling; investment development, cooperation, and partnerships in forest management; implementation of counselling and community empowerment in the field of forestry.

The roles of FMU in Social Forestry are vital and must constantly be improved. The roles include identifying site-level forest land tenure, community groups that will be actors in the Social Forestry program, land to be allocated for Social Forestry, and facilitating community institutional strengthening.

f. Working Group on Social Forestry (SF-WG)

Similar to FMU, the Working Group on Social Forestry was established to help accelerate social forestry in various regions in Indonesia. This Working Group consists of elements from the Regional Government, Non-Governmental Organizations (NGOs), Universities and parties related to social forestry.

The Working Group on Social Forestry has the duty to disseminate, facilitate and assist the target community up to the site-level, to perform sustainable forest management and utilization as well as business development, and to assist the government in verifying requests for access.

In addition, the Working Group on Social Forestry also functions as a forum for collaborative learning about social forestry by developing field schools and assisting the government in monitoring and evaluating the implementation of the social forestry program.

g. Financial Institutions

One of the issues in agricultural business and social forestry is the unavailability of financial capital. To manage this issue, the government should have been more serious in encouraging financial institutions (banks) to support farmers holding Social Forestry licenses by taking into account the ethical principles of Social Forestry as the financing requirements. The government must give the awareness to encourage funding schemes that benefit and empower the license holders. Any capital loan and investment practices which are potentially detrimental to the license holders should be avoided.

h. NGOs and Universities (Facilitators)

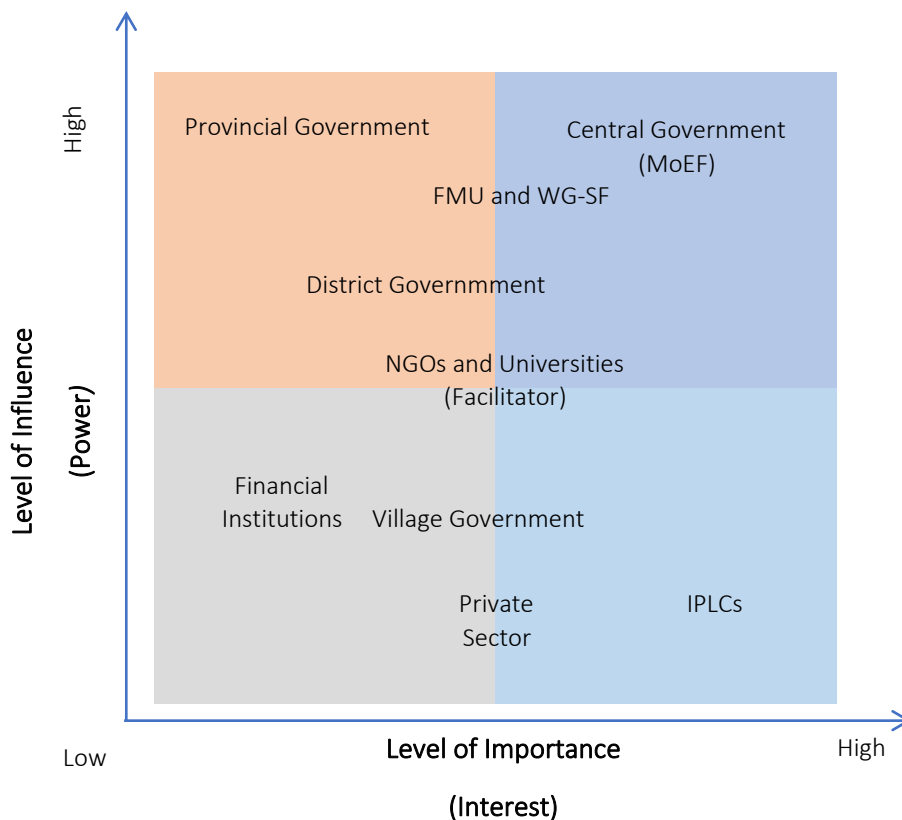
NGOs and universities have been playing an important role in encouraging Social Forestry implementation. Besides advocating Social Forestry policies, NGOs are also actively working in the field. Perhaps more than 90% of the existing Social Forestry working area is the result of NGOs' coaching. In Social Forestry, NGOs' roles include coaching and strengthening of community institutions, identifying and mapping of Social Forestry locations, mentoring social forestry management, and so forth. The involvement of NGOs in Social Forestry has also been institutionalized in the Working Group on Social Forestry Acceleration.

i. Private Sector

The private sector can serve as off-taker, making it easier for the industry in procuring raw materials. The private sector is expected to absorb the output or products generated by the Social Forestry, such as timber and non-timber forest products (fruits and nuts, vegetables, fish and game, medicinal plants, resins, essences and a range of barks and fibres such as bamboo, rattans, etc.). It means the private sector has a big role in accelerating Social Forestry.

Stakeholder analysis for this Project considered the vulnerable groups in particular and shows that IPLCs have the highest vested interest, but the lowest power. Meanwhile, stakeholders with the highest power are the Central and Provincial Governments, but their interest is not too high. In fact, the Provincial Government has always shown low interest in the Social Forestry program. More information on stakeholder analysis by level of power and interest in Social Forestry can be seen in Figure 3. The purpose of this analysis and knowledge is to carefully create a strategy to engage all parties so that in the future they can achieve the main objectives of the social forestry program. As part of this SEP, defining stakeholders' identities and interests at the project site level will be an important next step, to properly define engagement plans in each location.

Stakeholders based on Power and Interest in Social Forestry



4. Stakeholder Engagement Program

4.1. Summary of stakeholder engagement done during project implementation

The project has been implemented for four years and as part of the project extension will continue until June 2026. Stakeholder engagement has been integral part of the project implementation to date. The Project has established a digital and centralized project knowledge and data management system as the main channel for the Project's public outreach. Publication of products/activities that have been produced include, among others: Articles, news, internal activity information, field stories (Feature stories), infographics, videos, content on KOL sites, talk show coverage, Goes to campus activities, websites, and printed materials. The creation of these various publication products was carried out both by the Project Team itself and in collaboration with various parties. One example of collaboration in project publication activities is through the dissemination of Social Forestry content and various SSF Project activities on sites owned by Key Opinion Leaders (KOL). The collaboration with these KOLs aims to ensure that the socialization of the SSF program and project activities can reach a wider audience, especially among the younger generation. Summary of the project publication is presented in Annex 2.

4.2. Summary of project stakeholder needs and methods, tools and techniques for stakeholder engagement.

The Stakeholder Engagement Plan below outlines the engagement process, methods, including sequencing, topics of consultations and target stakeholders. The World Bank and the Borrower do not tolerate reprisals and retaliation against project stakeholders who share their views about Bank-financed projects.

Involvement Techniques	Application and Approach	Stakeholder	Time frame
Information Board (Fact Sheets)	Create an information board containing fact sheets related to Stakeholder Engagement in the Strengthening Social Forestry (SSF) project either in the Forest Management Unit (FMU), in the Province Level Office, or in every secretariat of farmer group/Social Forestry Business Groups (KUPS)	<ul style="list-style-type: none"> • FMU • Village Government • SF Group (KUPS) • IPLC / public 	Project Implementation Phase (commencing in Year 1 and ongoing)
Regular correspondence (via phone/WA/text message/email/others)	Build a communication platform such as WAG (WhatsApp Group) Personal communication via either phone, text message, WA, email, or other communication devices.	<ul style="list-style-type: none"> • FMU • SF Group (KUPS) • SF -WG 	Project Implementation Phase (commencing in Year 1 and ongoing)
Participative Public Consultation	Provide relevant information related to Strengthening Social Forestry (SSF) to public from the village, district up to national level Facilitation for building trust among the stakeholders. Design and facilitate a consultation process in a participative manner according to Guidelines of Organizing a Public Consultation Give an opportunity to the stakeholder group to give their views and opinions. Distribute non-technical project information to each community and other communities. Facilitate a meeting of village level by using poster, film, pamphlet, or other project information documents.	<ul style="list-style-type: none"> • FMU • Village Government • SF Group (KUPS) • IPLC / public 	Project Planning Phase, for design and ESMF development Project Implementation Phase Project Completion Phase

Involvement Techniques	Application and Approach	Stakeholder	Time frame
	Record the discussion, comments/questions or responses conveyed		
Formal meeting	<p>Present information of SSF project to the stakeholders equally.</p> <p>Build trust and mutual respect among the stakeholders.</p> <p>Give an opportunity to the stakeholder group to give their views and opinions.</p> <p>Build an impersonal relation to all stakeholders in all levels.</p> <p>Distribute technical documents to the relevant groups.</p> <p>Facilitate a meeting by utilizing an attractive instrument.</p> <p>Record the discussion, comments/questions or responses conveyed</p>	<ul style="list-style-type: none"> • Regional government • FMU • Village Government • SF Group (KUPS) • IPLC / public 	<p>Project Implementation Phase</p> <p>Project Completion Phase</p>
Workshop	<p>Present information of SSF project to the stakeholders</p> <p>Facilitation for building trust among the stakeholders</p> <p>Avoid a long and boring "lecture" session</p> <p>Give an opportunity to the stakeholder group to give their views and opinions.</p> <p>Use the participative method (including interactive game) to facilitate a group discussion, to share opinions on many problems, to analyze information, and to develop a recommendation and strategy</p> <p>Record the discussion,</p>	<ul style="list-style-type: none"> • Regional government • FMU • Village Government • SF Group (KUPS) • IPLC 	<p>Project Implementation Phase</p> <p>Project Completion Phase</p>

Involvement Techniques	Application and Approach	Stakeholder	Time frame
	comments/questions or responses conveyed		
Focus Group Discussion (FGD)	<p>Facilitate a smaller group consisting of 8 – 15 people to give their views and opinions on targeted thing.</p> <p>Design and facilitate a process in a participative manner</p> <p>Facilitation for building trust among the stakeholders</p> <p>Use key questions as guidelines for facilitating FGD</p> <p>Record the discussion, comments/questions or responses conveyed</p>	<ul style="list-style-type: none"> • FMU • Village Government • SF Group (KUPS) • IPLC 	<p>Project Planning Phase, for design and ESMF development</p> <p>Project Implementation Phase</p> <p>Project Completion Phase</p>
Interview (one by one)	<p>Collect views and opinions</p> <p>Facilitate the stakeholders to talk freely but confidentially about controversial and sensitive problems.</p> <p>Build a personal relation to the stakeholders</p> <p>Build trust through an attractive conversation</p> <p>Recording the interview</p>	All / any stakeholder type	<p>Project Planning Phase, for design and ESMF development</p> <p>Project Implementation Phase</p> <p>Project Completion Phase</p>
Field Survey	<p>Collect opinions and views from each stakeholder</p> <p>Collect the primary data or the secondary data</p> <p>Record the data</p> <p>Develop a basic database to monitor the impact</p>	All / any stakeholder type	Project Implementation Phase

4.3. Proposed strategy to incorporate the views of vulnerable groups

Participation is required when indigenous people and local communities develop an activity plan through Social Forestry Enterprise Groups (KUPS). This is important to ensure that indigenous people and local communities have a strong sense of ownership when moving towards planned activities. A participatory process has been and continue to be implemented in such a way that it can help anticipate potential conflicts in the indigenous people and local communities' circles and the required mitigation measures. The participatory process involves as many women as possible and the representatives of vulnerable groups. Special measures to ensure their access to participate will be identified and carried out (for example, having women facilitators, having separate meetings and meeting times that suit womens'/other groups' schedules, and adjustment to language and examples, as necessary).

5. Resources and Responsibilities for implementing stakeholder engagement

5.1. Implementation Arrangements and Resources

The institutional arrangement for the SEP will follow the project's overall implementation arrangements to ensure that stakeholder engagement is fully mainstreamed into the project implementation. The institutional arrangements for the SEP implementation are therefore also consistent with those for the Project's Environmental and Social Management Framework (ESMF). As per the agreement between the Government and the World Bank and according to the prevailing legislation, the funding to be used to execute this project is a decentralization fund. Therefore, according to the existing institutional roles and functions, Directorate General of Social Forestry and Environmental Partnership (PSKL) is the Executing Agency.

The institutional elements of the project organization are:

1. National Steering Committee (NSC) is led by the Directorate General of Social Forestry (PS). The NSC members are the echelon 2 officials in charge of the Forests and Social Forestry i.e. Ministry Forestry (MF), National Development Planning Agency (Bappenas), Ministry of Home Affairs (MoHA), Ministry of Village, Development of Disadvantaged Regions and Transmigration (MoV), Coordinating Ministry for Economic Affairs (CMEA), Ministry of Agriculture (MoA), Ministry of Finance (MoF), Ministry of State Owned Enterprises (MoSOE), Ministry of Cooperatives (MoC), Micro, Small and Medium Enterprises (MSME), Ministry of Trade (MoT), Creative Economy Agency (BEKRAF), Ministry of Agrarian Affairs and Spatial Planning (MoAASP), Ministry of Tourism, 2 (two) members of Social Forestry Acceleration Team (locally TP2PS), Coordinating Ministry of Food Security
2. Project Management Unit (PMU) or Executing Agency (EA) led by the Director of Social Forestry Area Preparation (PKPS) as the Proxy Budget User (KPA) of the SSF Project;
3. Project Implementation Unit (PIU) at the Management Unit/Forest Management Unit (KPH) as the Commitment Making Officer (PPK) of SSF Project
4. Project Management Office (PMO) is the professional administrative consultant
5. Provincial Forestry Agency as mandated in Law No. 23 concerning Decentralization.
6. Working Group of Social Forestry Acceleration
7. Project Management Consultant to SSF Project (PMC) is a professional institution commissioned by the PMU (or the World Bank) to provide services or technical assistance for PMU and PIU. PMC consists of several consultants in their corresponding expertise

(Team Coordinator; Policies and Institutional Specialist; Capacity Building Specialist; Business Development Specialist; Safeguard Specialist; Monitoring Specialist; Communication Specialist; Evaluation and Outreach; Procurement Specialist; and Financial Specialist).

The Project Implementation Unit (PIU), in this case the Forest Management Unit (FMU) established in the project working area, serves as the site-level executor. In relation to safeguarding, they must consider negative list as a list of activities that cannot be supported by SSF project. Environmental and social management framework at site level must be implemented with supervision from the PIU safeguard specialists. This includes ensuring the SEP is followed, with stakeholders identified, analyzed, engaged, monitored and grievances handled appropriately.

PMU is responsible for ensuring that the SEP is budgeted for and implemented, including the development of the IPPs for sites and specific sub-projects. PMU takes the role of disseminating information regarding screening, use of the negative list of activities that cannot be funded by the SSF Project to on-site implementers and all relevant parties, and preparation of the ESMFs, including with appropriate consultation of stakeholders including indigenous peoples, meeting FPIC requirements. PMU also puts emphasis on the importance of stronger environmental and social management by ensuring adequate staffing and budget allocations. PMU will plan and finance the conduct of capacity building activities related to the SEP as part of its ESMF capacity building and will allocate funds for the necessary stakeholder engagement activities with all relevant parties, as set out in the Project Implementation Manual (PIM) and its capacity building plan. PMU supervises the PIU in the implementation of all commitments in this IPPF and reports aggregate impact of the project to all relevant parties.

Responsibility of Each Party for SEP

Phases	EA/PMU	PIU
Activities Planning	<p>Dissemination of information to PIU and all relevant parties regarding safeguard, its policies, and the negative list of SSF project.</p> <p>Capacity building related to IPPF (as part of ESMF)</p>	<p>Identification of social and environmental issues and the mitigation as well as making Environmental and Social Management Plans and related instruments (RAP or IPP if required).</p> <p>Documentation of consultation with stakeholders including specific processes for indigenous peoples.</p> <p>Committed to implement ESMF, including preparing relevant plans based on ESMF annexes (Indigenous Peoples Plan, etc.)</p>
Implementation	<p>Disclose relevant information to the public</p> <p>Monitor the implementation of IPPF, through the Environmental and Social Management Plan at the site level</p> <p>Redress grievance at the national level</p>	<p>Implement, monitor, and report Environmental and Social Management Plan and IPPs.</p> <p>Documentation of consultation with stakeholders including specific processes for indigenous peoples.</p> <p>Redress grievance at site level</p>

Phases	EA/PMU	PIU
Post-implementation	Monitor, evaluate, and report aggregate impact of the project	Monitor project impact at site level, including how GRM is implemented and implementation of ESMF, Framework/Process Framework, Indigenous Peoples Planning Framework, Stakeholders Engagement Plan, etc.

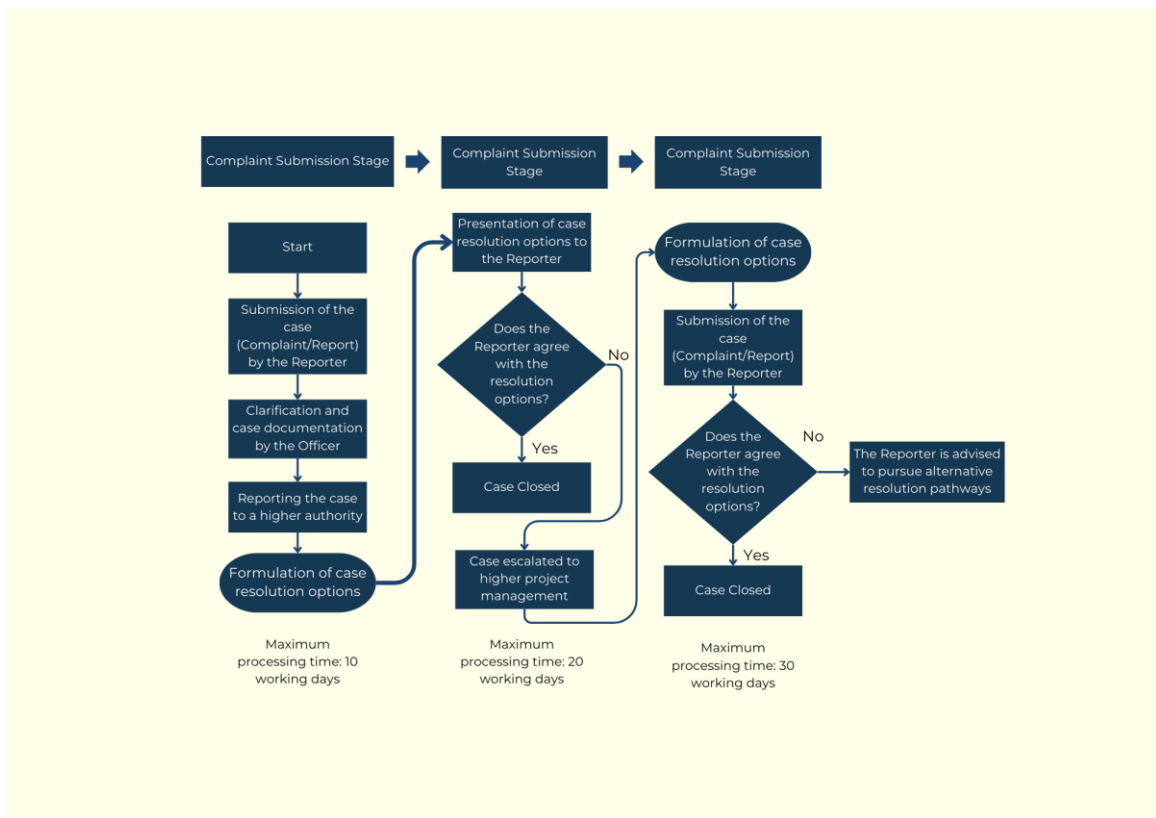
6. Grievance Mechanism

A Grievance Mechanism is a system that allows not only grievances, but also queries, suggestions, positive feedback, and concerns of project-affected parties related to the environmental and social performance of a project to be submitted and responded to in a timely manner.

The Project has developed a guideline for FGRM which outlines the principles, types of concerns/feedback, process, handling mechanism, resolution approach, and complaint form template. Dedicated staff for FGRM have been also appointed at the national, regional, and FMU level. The FGRM is officially issued as a decree of DG of Social Forestry SK.09/PKPS/PHKHTR/KLN.0/4/2024 on Complaint Handling Mechanism for SSF project. The channel is available at the project website (<https://ssf-pskl.id/newsroom>). At the field level, facilitators are the main focal point for the community to submit their feedback and/or concerns which will be processed in accordance with the complaint handling mechanism.



6.1. Description of Grievance Mechanism (GM)



The **Grievance Redress Mechanism (GRM) flowchart** outlines the step-by-step process of handling complaints in the SSF Project. It is divided into three major phases:

1. Complaint Submission Stage

- The complaint is **submitted** (either verbally or in writing) by the reporter to:
 - WhatsApp on the Alert Channel or hotline (0851-7533-5571)
 - Complaint email (pengaduan.ssf@ssf-pskl.id)
 - using the barcode that directly connects to the form on the SSF project website (<https://ssf-pskl.id/>)
- The **officer clarifies and verifies** the complaint to determine its validity with its superior such as Head of KPH/Head of PSKL/Social safeguard consultant.
- If the complaint is valid, it moves to the **resolution formulation phase**.

2. Grievance Redress Stage

- The project team **presents a resolution option** to the reporter.
- The reporter is asked: "**Do you accept the resolution?**"
 - **If YES**, the case is closed.
 - **If NO**, the complaint proceeds to the **advanced grievance resolution phase**.

3. Advanced Grievance Handling Phase

- A more detailed **resolution is formulated** at a higher level, may involve Echelon 1 level within the Ministry of Environment and Forestry (KLHK) or other related institution.
- The resolution is then **presented again** to the reporter.
- If the reporter **rejects the resolution again**, the case is referred for **mediation or further action** at the **national level**.

The entire process follows a **clear timeline**, with:

- **10 working days** for initial complaint handling.
- **20 working days** for the first resolution attempt.
- **30 working days** for advanced grievance handling if necessary.

This structured approach ensures that complaints are handled **efficiently, fairly, and transparently**, preventing conflicts that could disrupt the SSF Project.

The project has also developed and implemented labor management procedures that outline a mechanism to receive and resolve grievances related to labor and working conditions.

7. Monitoring and Reporting

7.1. Summary of how SEP will be monitored and reported upon (including indicators)

The SEP will be monitored based on both qualitative reporting (based on progress reports) and quantitative reporting linked to results indicators on stakeholder engagement and grievance performance.

SEP reporting will include the following:

- (i) Progress reporting on the ESS10-Stakeholder Engagement commitments under the Environmental and Social Commitment Plan (ESCP)
- (ii) Cumulative qualitative reporting on the feedback received during SEP activities, in particular (a) issues that have been raised that can be addressed through changes in project scope and design, and reflected in the basic documentation such as the Project Appraisal Document, Environmental and Social Assessment, Resettlement Plan, Indigenous Peoples Plan; (b) issues that have been raised and can be addressed during project implementation; (c) issues that have been raised that are beyond the scope of the project and are better addressed through alternative projects, programs or initiatives; and (d) issues that cannot be addressed by the project due to technical, jurisdictional or excessive cost-associated reasons. Minutes of meetings summarizing the views of the attendees can also be annexed to the monitoring reports.
- (iii) Quantitative reporting based on the indicators included in the SEP. An illustrative set of indicators for monitoring and reporting is included in Annex 3.

7.2. Reporting back to stakeholder groups

The SEP will be revised and updated as necessary during project implementation.

Annexes

- Annex 1. Updated list of stakeholders

No	Position	Institution/ Organization
1	Chief of Inspector/ GEF Focal Point	Ministry of Environment
2	Director General	DG of PS Ministry of Forestry
3	Director General	DG of Sustainable Forest Management Ministry of Forestry
4	Director General	DG of Forestry Planology Ministry of Forestry
5	Director General	DG of PDASRH, Ministry of Forestry
6	Head of BPSDMK/Forestry Human Resources Development Agency	BPSDMK Ministry of Forestry
7	Head of Association of State-Owned Banks	Association of State-Owned Banks (BUMN)/HIMBARA
8	DG of PEID	Ministry of Villages and Disadvantaged Regions
9	Prof. Dr. Ir. Didik Suharjito	Faculty of Forestry IPB University
10	Dani Wahyu Munggoro	Director of Inspirit
11	Director of PKPS	DG of PS Ministry of Forestry
12	Director of PUPS	DG of PS Ministry of Forestry
13	Director of PPS	DG of PS Ministry of Forestry
14	Director of PKTHA	DG of PS Ministry of Forestry
15	Secretariat of the Directorate General	DG of PS Ministry of Forestry
16	Deputy Assistant of Sustainable Forest Management	Ministry Coordinator of Food Security
17	Director of Forestry & Water Conservation	National Development Planning Agency
18	Deputy for development funding	National Development Planning Agency
19	Deputy for maritime affairs and natural resources	National Development Planning Agency
20	Head of Budget Preparation Directorate	DG of Budget, Min of Finance
21	Staff of Budget Preparation Directorate	DG of Budget, Min of Finance
22	Director of development of superior village products	Ministry of Villages and Disadvantaged Regions
23	Director of development of village economic institutions and investment	Ministry of Villages and Disadvantaged Regions
24	DG of Regional Development/Bangda	Ministry of Internal Affairs
25	Director of SUPD I	Ministry of Internal Affairs
26	Head of Sub-directorate of Forestry	Ministry of Internal Affairs

No	Position	Institution/ Organization
27	Deputy for financing and investment of SMEs	Ministry of Cooperation and SMEs
28	Head of Planning Bureau	Secretariat General of Ministry of Forestry
29	Head of Foreign Cooperation Bureau (KLN)	Secretariat General of Ministry of Forestry
30	Director of determination and arrangement of forest areas.	DG Of Forestry Planology Ministry of Forestry
31	Director of Forest Utilization Planning Development	DG of Sustainable Forest manahement Ministry of Forestry
32	Head of Sub-directorate of PHKM & HTR, PKPS Directorate	DG of PSKL Ministry of Environment and Forestry
33	Head of Sub-directorate of PHD & KK, PKPS Directorate	DG of PSKL Ministry of Environment and Forestry
34	Head of Sub-directorate of PKKPS (Area Patterning) of PKPS Directorate	DG of PS Ministry of Forestry
35	Head of Sub-directorate of PPKPS (Preparation of Permits/Agreements) of PKPS Directorate	DG of PS Ministry of Forestry
36	Head of sub-directorate of PHA n PKL of PKTHA directorate	DG of PS Ministry of Forestry
37	Head of Sub-directorate of PKTKH of PKTHA Directorate	DG of PS Ministry of Forestry
38	Head of Sub-directorate of SF Business Institutional Development of PUPS Directorate	DG of PS Ministry of Forestry
39	Head of Sub-directorate of SF Business Entrepreneurship of PUPS Directorate	DG of PS Ministry of Forestry
40	Head of Sub-directorate of SF Institutionalization od PPS Directorate	DG of PS Ministry of Forestry
41	Director of Forest Rehabilitation	DG of PDASRH Ministry of Forestry
42	Head of Sub-directorate of KPH Development of BRPH Directorate	DG of PHL Ministry of Forestry
43	Directorate of RPKH & PWPH	DG of Forestry Planology, Ministry of Forestry
44	Directorate of Species n Genetic Conservation	DG of KSDAE Ministry of Forestry
45	Researcher	National Research and Innovation Agency (BRIN)
46	Staff of DG Secretariate	DG PS Ministry of Forestry
47	Staff of PKPS Directorate	DG of PS Ministry of Forestry
48	Staff of Sub-directorate of PHKM & HTR, PKPS Directorate	DG of PSKL Ministry of Environment and Forestry
49	Staff of Sub-directorate of PKKPS, directorate of PKPS	DG of PS Ministry of Forestry

No	Position	Institution/ Organization
50	Staff of Sub-directorate of PPKPS of PKPS Directorate	DG of PS Ministry of Forestry
51	Regional office of Social Forestry and Environment Partnership (BPSKL) of Sumatra	DG of PSKL Ministry of Environment and Forestry
52	Regional office of Social Forestry and Environment Partnership (BPSKL) of Bali Nusa Tenggara	DG of PSKL Ministry of Environment and Forestry
53	Regional office of Social Forestry and Environment Partnership (BPSKL) of Maluku Papua	DG of PSKL Ministry of Environment and Forestry
54	Regional Office of Social Forestry Type A Medan	DG of PS Ministry of Forestry
55	Regional Office of Social Forestry Type B Kampar	DG of PS Ministry of Forestry
56	Regional Office of Social Forestry Type B Palembang	DG of PS Ministry of Forestry
57	Regional Office of Social Forestry Type B Denpasar	DG of PS Ministry of Forestry
58	Reginal Office of Social Forestry Type A Ambon	DG of PS Ministry of Forestry
59	Nurka Cahyaningsih	TP3PS
60	Nur Amalia	TP3PS
61	Andi R Kurniadi	TP3PS
62	Hasantoha Adnan	TP3PS
63	Swary Utami Dewi	TP3PS
64	Rakhmat Hidayat	TP3PS
65	Country director	WRI Indonesia
66	Executive Board of KfW	KfW
67	Zainuri Hasyim	Rainforest Alliance
68	Director of Indonesia Country	RECOFTC
69	Reny Juita	RECOFTC
70	Head of PB AMAN	AMAN
71	Coordinator of BRWA	BRWA
72	Country Director, Indonesia Program	CIFOR
73	Country Director, Indonesia Program	ICRAF
74	Secretariat Office of AWG-SF	AWG-SF
75	National Executive	FKKM
76	Head of DPN FKKM	FKKM

No	Position	Institution/ Organization
77	Project Leader	Forest Program V
78	Director	PT Hatfield Indonesia
79	Director	The Asia Foundation
80	Director	Kehati Foundation
81	Director Program	Partnership for Governance reform
82	Director	LATIN
83	Director	Madani Foundation
84	Head of AMAN	Indigenous Peoples Alliance/AMAN
	West Sumatra Province/Lima Puluh Kota District	
85	Governor	Provincial Government of West Sumatra
86	Head of Regional Province Secretariat/Sekda	Provincial Government of West Sumatra
87	Head of Forestry Province Services	Provincial Government of West Sumatra
88	Head of Regional Province Planning Agency	Provincial Government of West Sumatra
89	Head of Environment Province Services	Provincial Government of West Sumatra
90	Head of Community and Village Empowerment Province Services	Provincial Government of West Sumatra
91	Head of Cooperatives and SMEs Province Services	Provincial Government of West Sumatra
92	Head of Tourism Province Services	Provincial Government of West Sumatra
93	Head of Food Crops and Plantation Province Services	Provincial Government of West Sumatra
94	Head of animal Husbandry Province Services	Provincial Government of West Sumatra
95	Head of of Lima Puluh Kota District/Bupati	Lima Puluh Kota District
96	Head of Research and Planning Agency	Lima Puluh Kota District
97	Head of Regional District Secretariate	Lima Puluh Kota District
98	Head of Tourism District Services	Lima Puluh Kota District
99	Head of Environment District Services	Lima Puluh Kota District
100	Head of Food crops and Plantation District Services	Lima Puluh Kota District
101	Head of Animal Husbandry District Services	Lima Puluh Kota District
102	Head of Fisheries District Services	Lima Puluh Kota District
103	Head of FMU/KPH Limah Puluh Kota	Forestry Services of West Sumatra Province
104	PDAS Office/BPDAS Agam Kuantan of West Sumatra	DG of PDASRH Ministry of Forestry

No	Position	Institution/ Organization
105	BPHL Office of Reion III of Pekanbaru	DG of PHL Ministry of Forestry
106	KSDA Office/BKSDA West Sumatra Province	DG of KSDAE Ministry of Forestry
107	Head of Forestry Department	Muhammadiyah University
108	Andalas University	Andalas university
109	SF Acceleration Task Force (Pokja PPS Province)	Multi-stakehoLDer Forum in West Sumatra Province
110	SF Acceleration Task Force (Pokja PPS District)	Multi-stakehoLDer Forum in Lima Puluh Kota District
111	Executive daerah Walhi West Sumatra	WALHI (Friend of The Earth)
112	Head of PW AMAN	AMAN /Indigenous peoples alliance
113	Head of QBAR	QBAR/NGO
114	Head of KKI Warsi	KKI Warsi
115	Head of Payakumbuh State Polytechnic	Payakumbuh Sate Polytechnic
	Lampung Province and South Lampung District	
116.	Governor	Government of Lampung Province
117.	Head of Regional Province Secretariat/Sekda	Government of Lampung Province
118.	Head of Forestry Province Services	Government of Lampung Province
119.	Head of Regional Province Planning Agency	Government of Lampung Province
120.	Head of Environment Province Services	Government of Lampung Province
121.	Head of Community and Village Empowerment Province Services	Government of Lampung Province
122.	Head of Cooperatives and SMEs Province Services	Government of Lampung Province
123.	Head of Tourism Province Services	Government of Lampung Province
124.	Head of Food Crops and Plantation Province Services	Government of Lampung Province
125.	Head of animal Husbandry Province Services	Government of lampung Province
126.	Head of of Lima Puluh Kota District/Bupati	South of Lampung District
127.	Head of Research and Planning Agency	South of Lampung District
128.	Head of Regional District Secretariate	South of Lampung District
129.	Head of Tourism District Services	South of Lampung District
130.	Head of Environment District Services	South of Lampung District
131.	Head of Food crops and Plantation District Services	South of Lampung District

No	Position	Institution/ Organization
132.	Head of Animal Husbandry District Services	South of Lampung District
133.	Head of Fisheries District Services	South of Lampung District
134.	Head of FMU/KPH Gedong Wani	Forestry Services of Lampung Province
135.	Head of FMU/KPH Batu Serampok	Forestry Services of Lampung Province
136.	Head of FMU/KPH Way Pisang	Forestry Services of Lampung Province
137.	PDAS Office/BPDAS WSS Lampung	DG of PDASRH Ministry of Forestry
138.	BPHL Office of Region VI Bandar Lampung	DG of PHL Ministry of Forestry
139.	KSDA Office/BKSDA Lampung Province	DG of KSDAE Ministry of Forestry
140.	Head of Forestry department, Faculty of Agriculture	UNILA/Lampung University
141.	SF Acceleration Task Force (Pokja PPS Province)	Multi-stakeholder Forum in Lampung Province
142.	SF Acceleration Task Force (Pokja PPS District)	Multi-stakeholder Forum in South of Lampung District
143.	Executive daerah Walhi Lampung	WALHI (Friend of The Earth)
144.	Director of WATALA	WATALA/NGO
145.	West Nusa Tenggara, Dompu District, District and City of Bima	
146.	Governor	Provincial Government of West Nusa Tenggara/NTB
147.	Head of Regional Province Secretariat/Sekda	Provincial Government of West Nusa Tenggara/NTB
148.	Head of Environment and Forestry Province Services	Provincial Government of West Nusa Tenggara/NTB
149.	Head of Regional Province Planning Agency	Provincial Government of West Nusa Tenggara/NTB
150.	Head of Community and Village Empowerment Province Services	Provincial Government of West Nusa Tenggara/NTB
151.	Head of Cooperatives and SMEs Province Services	Provincial Government of West Nusa Tenggara/NTB
152.	Head of Tourism Province Services	Provincial Government of West Nusa Tenggara/NTB
153.	Head of Food Crops and Plantation Province Services	Provincial Government of West Nusa Tenggara/NTB
154.	Head of animal Husbandry Province Services	Provincial Government of West Nusa Tenggara/NTB
155.	Head of of Dompu District/Bupati	Dompu District
156.	Head of Research and Planning Agency	Dompu District
157.	Head of Regional District Secretariate	Dompu District
158.	Head of Tourism District Services	Dompu District

No	Position	Institution/ Organization
159.	Head of Environment District Services	Dompu District
160.	Head of Food crops and Plantation District Services	Dompu District
161.	Head of Animal Husbandry District Services	Dompu District
162.	Head of Fisheries District Services	Dompu District
163.	Head of of Bima District/Bupati	Bima District
164.	Head of Research and Planning Agency	Bima District
165.	Head of Regional District Secretariate	Bima District
166.	Head of Tourism District Services	Bima District
167.	Head of Environment District Services	Bima District
168.	Head of Food crops and Plantation District Services	Bima District
169.	Head of Animal Husbandry District Services	Bima District
170.	Head of Fisheries District Services	Bima District
171.	Head of of Bima City /Walikota	Bima City
172.	Head of Research and Planning Agency	Bima City
173.	Head of Regional District Secretariate	Bima City
174.	Head of Tourism District Services	Bima City
175.	Head of Environment District Services	Bima City
176.	Head of Food crops and Plantation District Services	Bima City
177.	Head of Animal Husbandry District Services	Bima City
178.	Head of Fisheries District Services	Bima City
179.	Head of FMU/KPH Topaso	Forestry Services of West Nusa Tenggara Province
180.	Head of FMU/KPH Tambora	Forestry Services of West Nusa Tenggara Province
181.	Head of FMU/KPH Ampang Riwo	Forestry Services of West Nusa Tenggara Province
182.	Head of FMU/KPH Marowa	Forestry Services of West Nusa Tenggara Province
183.	Head of FMU/KPH Mapangga Donggo Masa/MDM	Forestry Services of West Nusa Tenggara Province
184.	PDAS Office/BPDAS Dodokan Moyosari of NTB	DG of PDASRH Ministry of Forestry
185.	BPHL Office of Region VII Surabaya	DG of PHL Ministry of Forestry
186.	KSDA Office/BKSDA West Nusa Tenggara	DG of KSDAE Ministry of Forestry
187.	Head of Forestry Department	Mataram University

No	Position	Institution/ Organization
188.	Head of Faculty of Agriculture	Mataram University
189.	SF Acceleration Task Force (Pokja PPS Province)	Multi-stakeholder Forum in West Nusa Tenggara Province
190.	SF Acceleration Task Force (Pokja PPS District)	Multi-stakeholder Forum in Dompu District
191.	Director of Konsepsi NTB	Konsepsi NTB/NGO
192.	Director of LP2DM Dompu	LP2DM Dompu/NGO
193.	Head of AMAN Regional Board of NTB	Indigenous People Alliance
194.	Program Coordinator	LP2DER BIMA/NGO
195.	Mujmah Kemiri, PT (Enterprise)	Private business (enterprise)
196.	CV. Tri Umi Jaya (Kidom Moringa/Kelon)	Private business (enterprise)
	North Maluku Province and West Halmahera District	
197.	Governor	Provincial Government of North Maluku
198.	Head of Regional Province Secretariat/Sekda	Provincial Government of North Maluku
199.	Head of Forestry Province Services	Provincial Government of North Maluku
200.	Head of Regional Province Planning Agency	Provincial Government of North Maluku
201.	Head of Environment Province Services	Provincial Government of North Maluku
202.	Head of Community and Village Empowerment Province Services	Provincial Government of North Maluku
203.	Head of Cooperatives and SMEs Province Services	Provincial Government of North Maluku
204.	Head of Tourism Province Services	Provincial Government of North Maluku
205.	Head of Food Crops and Plantation Province Services	Provincial Government of North Maluku
206.	Head of of West Halmahera District/Bupati	West Halmahera District
207.	Head of Research and Planning Agency	West Halmahera District
208.	Head of Regional District Secretariate	West Halmahera District
209.	Head of Tourism District Services	West Halmahera District
210.	Head of Environment District Services	West Halmahera District
211.	Head of Food crops and Plantation District Services	West Halmahera District
212.	Head of Fisheries District Services	West Halmahera District
213.	Head of FMU/KPH West Halmahera	Forestry Services of North Maluku Province

No	Position	Institution/ Organization
214.	PDAS Office/BPDAS Ake malam	DG of PDASRH Ministry of Forestry
215.	BPHL Office of Region III of Ambon	DG of PHL Ministry of Forestry
216.	KSDA Office/BKSDA North Maluku Province	DG of KSDAE Ministry of Forestry
217.	Head of Forestry Department	University of Khairun
218.	SF Acceleration Task Force (Pokja PPS Province)	Multi-stakeholder Forum in North Maluku Province
219.	SF Acceleration Task Force(Pokja PPS District)	Multi-stakeholder Forum in West Halmahera District
220.	Head of Customary Council of West Halmahera	Customary Council of West Halmahera
221.	DEWACOCO, PT	Private Business (Company)
	KPS/KUPS	
	LIMA PULUH KOTA DISTRICT OF WEST SUMATRA PROVINCE	
222.	Head Of Lphd Nagari Koto Tinggi	Business Unit Of KPS/LPHD Koto Tinggi.
223.	Head Of Kps/Lphd Koto Tinggi	Business Unit Of KUPS Jaya Bereaksi
224.	Head Of Kps/Lphd Lubuak Sakti	Business Unit Of KUPS Lubuak Sakti
225.	Head Of KUPS KTH Bina Tani	Business Unit Of Lphd Koto Tinggi
226.	Head Of KUPS Pinang Wangi/KUPS Lphn Kubang	Business Unit Of Lphd Kubang
227.	Head Of KUPS Batu Susu	Business Unit Of Lphd Kubang
228.	Head Of KUPS Kharisma Indonesia	Business Unit Of Lphd Kubang
229.	Head Of KUPS Pekoteng	Business Unit Of Lphd Kubang
230.	Head Of KUPS Jeruk Pejerta	Business Unit Of Lphd Kubang
231.	Head Of Lphd Kubang	Business Unit Of Lphd Kubang
232.	Head Of KUPS Agroforestry	Business Unit Of Lphd Pandam Gadang
233.	Head Of KUPS Puncak Kubangan	Business Unit Of Lphd Pandam Gadang
234.	Head Of KUPS Palo Lubuak	Business Unit Of Lphd Tujuh Koto Talago
235.	Head Of KUPS Solok Bio-Bio	Business Unit Of LPHN Solok Bio-Bio
236.	Head Of KUPS Guguk Karamat	Business Unit Of Lphn Sarilamak
237.	Head Of KUPS Madu Shahih	Business Unit Of Lphn Sarilamak
238.	Head Of KUPS Baruah Gunung Sakato	Business Unit Of Lphn Baruah Gunung
239.	Head Of KUPS Simpang Tanjung	Business Unit Of KTH Simpang Tanjung
240.	Head Of KUPS Sepakat	Business Unit Of Lphn Banja Loweh
241.	Head Of KUPS Sejawi	Business Unit Of Lphn Banja Loweh
242.	Head Of KUPS Batu Godang	Business Unit Of Lphn Banja Loweh

No	Position	Institution/ Organization
243.	Head Of KUPS Ampek Suku	Business Unit Of Lphn Banja Loweh
244.	Head Of KUPS Jambak Sakato	Business Unit Of Lphn Banja Loweh
245.	Head Of KUPS Banja Loweh/KUPS Puncak Damar	Business Unit Of Lphn Banja Loweh
246.	Head Of KUPS Alam Baruah Gunuang	Business Unit Of Lphn Baruah Gunuang
247.	Head Of Koto Godang Saiyo Sakato	Business Unit Of Lphn Maek
248.	Head Of Madu Raso Bungo Tanjung	Business Unit Of Lphn Maek
249.	Head Of KUPS Bukik Posuak	Business Unit Of Lphn Maek
250.	Head Of KUPS Agrosilvofishery Milenial	Business Unit Of Lphn Simpang Kapuak
251.	Head Of KUPS Burai Sialang	Business Unit Of Lphn Simpang Kapuak
252.	Head Of KUPS Ekowisata Ayia Gonang	Business Unit Of Lphn Sungai Antuan
253.	Head Of KUPS Madu Nasa	Business Unit Of Lphn Sungai Antuan
254.	Head Of KUPS Alam Katama	Business Unit Of Lphn Talang Maur
255.	Head Of KUPS Karya Antama	Business Unit Of Lphn Talang Maur
256.	Head Of KUPS Kopi Merindu	Business Unit Of Lphn Talang Maur
257.	Head Of KUPS Aren Antama	Business Unit Of Lphn Talang Maur
258.	Head Of KUPS Bukik Pukek	Business Unit Of Kelompok Hutan Kemasyarakatan Maju Basamo
259.	Head Of KUPS Ternak Sejahtera	Business Unit Of Kt Hkm Sungai Abu Mandiri
260.	Head Of KUPS Danau Indah	Business Unit Of KTH Saiyo Sakato
261.	Head Of KUPS Kelong Bersama	Business Unit Of KTH Saiyo Sakato
262.	Head Of KUPS Genta	Business Unit Of KTH Saiyo Sakato
263.	Head Of Gunuang Malintang	Business Unit Of Lphn Gunuang Malintang
264.	Head Of Koto Alam	Business Unit Of Lphn Koto Alam
265.	Head Of KUPS Batu Putih	Business Unit Of KTH Kilalang
266.	Head Of KUPS Pengolahan Makanan	Business Unit Of KTH Kilalang
267.	Head Of KUPS Kopi Kikuyang	Business Unit Of KTH Kilalang
268.	Head Of KUPS Ekowisata	Business Unit Of Lphd Taeh Bukik
269.	Head Of KUPS Mutiara Onau	Business Unit Of Lphd Taeh Bukik
270.	Head Of Berkah Galo-Galo	Business Unit Of Lphd Taeh Bukik
271.	Head Of KUPS Rimbo Mangkisi	Business Unit Of Lphn Balai Panjang
272.	Head Of KUPS Abadi	Business Unit Of Lphn Kurai

No	Position	Institution/ Organization
273.	Head Of KUPS Rimbo Jaya	Business Unit Of Lphn Kurai
274.	Head Of KUPS Nusantara Coffee	Business Unit Of Lphn Kurai
275.	Head Of KUPS Coklat	Business Unit Of Lphn Sungai Rimbang
276.	Head Of KUPS Mak Suri	Business Unit Of Lphn Sungai Rimbang
277.	Head Of KUPS Kt Rimbo Buah/Rku Lphn Sungai Rimbang	Business Unit Of Lphn Sungai Rimbang
278.	Head Of KUPS Sungai Rimbang/KTH Agrosilvopastura	Business Unit Of Lphn Sungai Rimbang
279.	Head Of KUPS Durian Gadang	Business Unit Of Durian Gadang
280.	Head Of KUPS Pauh Sangik	Business Unit Of Lphn Pauh Sangik
281.	Head Of KUPS Ratu Lebah	Business Unit Of Lphn Sungai Balantiak
282.	Head Of Kelompok Hutan Kemasyarakatan Hulu Aia	Business Unit Of Kelompok Hutan Kemasyarakatan Hulu Aia
283.	Head Of KUPS Raja Buah	Business Unit Of Lphn Halaban
284.	Head Of KUPS Aren Berkah	Business Unit Of Lphn Halaban
285.	Head Of KUPS Pucuk Koa	Business Unit Of Lphn Harau
286.	Head Of KUPS Resam	Business Unit Of Lphn Harau
287.	Head Of KUPS Bukik Kumayan Lestari	Business Unit Of Lphn Harau
288.	Head Of KUPS Lphn Harau/KUPS Banja Lestari	Business Unit Of Lphn Harau
289.	Head Of KUPS KTH Sereh Wangi	Business Unit Of Lphn Taram
290.	Head Of KUPS KTH Galo-Galo	Business Unit Of Lphn Taram
291.	Head Of KUPS KTH Agroforestry	Business Unit Of Lphn Taram
292.	Head Of KUPS KTH Jamur Tiram	Business Unit Of Lphn Taram
293.	Head Of KUPS Ekowisata Kapalo Banda	Business Unit Of Lphn Taram
294.	Head Of KUPS Ekowisata Bukik Singok	Business Unit Of Lphn Durian Tinggi
295.	Head Of KUPS Melayu Lestari	Business Unit Of Lphn Sialang
296.	Head Of KUPS Melayu Saiyo	Business Unit Of Lphn Sialang
297.	Head Of KUPS Mudiek Mudo	Business Unit Of Lphn Sialang
298.	Head Of KUPS Lontiek Malam	Business Unit Of Lphn Sialang
	SOUTH LAMPUNG DISTRICT OF LAMPUNG PROVINCE	
299.	Head Of KUPS Kemiri Bina Mulya	Business Unit Of KTH Bina Mulya
300.	Head Of KUPS Bina Mulya	Business Unit Of KTH Bina Mulya
301.	Head Of KUPS Emping Melinjo	Business Unit Of KTH Hutan Tua

No	Position	Institution/ Organization
302.	Head Of KUPS Ternak Kambing	Business Unit Of KTH Hutan Tua
303.	Head Of KUPS Gula Aren	Business Unit Of KTH Hutan Tua
304.	Head Of KUPS Pilar Lestari	Business Unit Of KTH Hutan Tua
305.	Head Of KUPS Makmur Sejahtera	Business Unit Of KTH Jaya Makmur
306.	Head Of KUPS Agro Forestri Maju Lestari	Business Unit Of KTH Way Buha Lestari
307.	Head Of KUPS Jaya Bersama	Business Unit Of KTH Betung Jaya
308.	Head Of KUPS Silvopastura Jaya	Business Unit Of KTH Betung Jaya
309.	Head Of KUPS Lembah Hijau Sejahtera	Business Unit Of KTH Lembah Hijau
310.	Head Of KUPS Lembah Hijau 1	Business Unit Of KTH Lembah Hijau
311.	Head Of KUPS Pala Mandiri Berjaya	Business Unit Of KTH Rangai Sejahtera
312.	Head Of KUPS Darwis Satu Bersama	Business Unit Of KTH Rangai Sejahtera
313.	Head Of KUPS Bukit Rendingan	Business Unit Of KTH Rangai Sejahtera
314.	Head Of KUPS Jaya Bukit Tarahan	Business Unit Of KTH Rangai Sejahtera
315.	Head Of KUPS Pembibitan Sinar Gunung	Business Unit Of KTH Sinar Gunung
316.	Head Of KUPS Hijau Sejahtera li	Business Unit Of KTH Sinar Gunung
317.	Head Of KUPS Hijau Sejahtera I	Business Unit Of KTH Sinar Gunung
318.	Head Of Krian	Business Unit Of KTH Suban Lestari
319.	Head Of Sindang Rasa	Business Unit Of KTH Suban Lestari
320.	Head Of KUPS Suban Lestari	Business Unit Of KTH Suban Lestari
321.	Head Of KUPS Sekar Sari	Business Unit Of KTH Suban Lestari
322.	Head Of KUPS Suban Lestari Iv	Business Unit Of KTH Suban Lestari
323.	Head Of KUPS Petani Maju	Business Unit Of KTH Suban Lestari
324.	Head Of KUPS Suban Lestari li	Business Unit Of KTH Suban Lestari
325.	Head Of KUPS Tunas Asri	Business Unit Of KTH Wahana Lancar
326.	Head Of KUPS Mitra Wahana Tani	Business Unit Of KTH Wahana Lancar
327.	Head Of KUPS Mitra Wahana Lestari	Business Unit Of KTH Wahana Lancar
328.	Head Of KUPS Berkah Jaya	Business Unit Of Gapoktanhut Jaya Abadi
329.	Head Of KUPS Jabadi Gunung Batu	Business Unit Of Gapoktanhut Jaya Abadi
330.	Head Of KUPS Jabadi Capra	Business Unit Of Gapoktanhut Jaya Abadi
331.	Head Of KUPS Jabadi Bos Taurus	Business Unit Of Gapoktanhut Jaya Abadi
332.	Head Of KUPS Jabadi Veneer	Business Unit Of Gapoktanhut Jaya Abadi
333.	Head Of KUPS Wana Budi Jaya	Business Unit Of Gapoktanhut Tani Maju

No	Position	Institution/ Organization
334.	Head Of KUPS Wana Purwo Sari	Business Unit Of Gapoktanhut Tani Maju
335.	Head Of KUPS Wana Asri Mandiri	Business Unit Of Gapoktanhut Tani Maju
336.	Head Of KUPS Wana Karang Jaya	Business Unit Of Gapoktanhut Tani Maju
337.	Head Of KUPS Wana Sumber Rejeki	Business Unit Of Gapoktanhut Tani Maju
338.	Head Of KUPS Bankir Lestari	Business Unit Of KTH Karya Makmur Lestari
339.	Head Of KUPS Rimbe Farm	Business Unit Of KTH Rimbe Pasmah
340.	Head Of KUPS Subur Makmur	Business Unit Of KTH Wono Lestari
341.	Head Of KUPS Perikanan	Business Unit Of Gapoktan Gemah Ripah
342.	Head Of KUPS Pengembangan Tanaman	Business Unit Of Gapoktan Gemah Ripah
343.	Head Of KUPS Bintang Karya Mandiri	Business Unit Of Gapoktan Karya Muda
344.	Head Of KUPS Madu Karya Sejahtera	Business Unit Of Gapoktan Karya Muda
345.	Head Of KUPS Wana Harapan	Business Unit Of Gapoktan Karya Muda
346.	Head Of KUPS Wana Makmur	Business Unit Of Gapoktan Karya Muda
347.	Head Of KUPS Wana Karya	Business Unit Of Gapoktan Karya Muda
348.	Head Of KUPS Wana Jaya	Business Unit Of Gapoktan Karya Muda
349.	Head Of KUPS Wana Tani	Business Unit Of Gapoktanhut Jati Rukun
350.	Head Of KUPS Ternak Sapi	Business Unit Of Gapoktanhut Jati Rukun
351.	Head Of KUPS Ternak Kambing	Business Unit Of Gapoktanhut Jati Rukun
352.	Head Of KUPS Industri Rumah Tangga Keripik Singkong	Business Unit Of Gapoktanhut Jati Rukun
353.	Head Of KUPS Malantri Bee Farm	Business Unit Of Gapoktanhut Wana Barokah
354.	Head Of KUPS Sinung Jaya	Business Unit Of Gapoktanhut Wana Barokah
355.	Head Of KUPS Peternakan	Business Unit Of KTH Madu Sari
356.	Head Of KUPS Jaya Berkah Farm	Business Unit Of KTH Maju Jaya Berkah
357.	Head Of KUPS Karya Madu	Business Unit Of KTH Sri Rejeki
358.	Head Of KUPS Karya Baru	Business Unit Of KTH Agro Forest Park
359.	Head Of KTH Agro Sumber Rejeki	Business Unit Of KTH Agro Sumber Rejeki
360.	Head Of KUPS Madu Jaya Lestari	Business Unit Of KTH Jaya Mandiri
361.	Head Of KUPS Sari Mekar	Business Unit Of KTH Mekar Sari
362.	Head Of KUPS Karya Mandiri Jaya	Business Unit Of KTH Wana Tani
363.	Head Of KUPS Unggul Jaya	Business Unit Of Gapoktanhut Berkah Abadi Ruguk
364.	Head Of Alap-Alap Timur	Business Unit Of Gapoktanhut Berkah Abadi Ruguk

No	Position	Institution/ Organization
365.	Head Of Gapoktanhut Khagom Mufakat	Business Unit Of Gapoktanhut Khagom Mufakat
366.	Head Of KUPS Taman Dewata	Business Unit Of Gapoktanhut Legundi Jaya Makmur
367.	Head Of KUPS Jaya Makmur	Business Unit Of Gapoktanhut Legundi Jaya Makmur
368.	Head Of KUPS Subur Makmur	Business Unit Of Gapoktanhut Legundi Jaya Makmur
369.	Head Of KUPS Rantau Makmur Berkah Mandiri	Business Unit Of Gapoktanhut Sejahtera Makmur
370.	Head Of Wisata Hutan Mangrove Sunda Land	Business Unit Of KTH Peta Kawan
371.	Head Of KUPS Mutiara Pasir	Business Unit Of KTH Peta Kawan
372.	Head Of KUPS Tambak Lestari	Business Unit Of KTH Peta Kawan
373.	Head Of KUPS Babulang Lestari	Business Unit Of Lphd Babulang
374.	Head Of KUPS Babulang Indah	Business Unit Of Lphd Babulang
375.	Head Of KUPS Fillah	Business Unit Of Lphd Pematang
376.	Head Of KUPS Cecakah Way Pekhos	Business Unit Of Lphd Pematang
377.	Head Of KUPS Damar Bujung	Business Unit Of Lphd Pematang
378.	Head Of Sumber Berkah	Business Unit Of Lphd Semanak
379.	Head Of KUPS Sumbang Rasa Durian	Business Unit Of Lphd Semanak
380.	Head Of KUPS Sumbang Rasa Kopi	Business Unit Of Lphd Semanak
381.	Head Of KUPS Ternak Kambing Mandiri	Business Unit Of Lphd Sumur Kumbang
382.	Head Of KUPS Leweung Kolot	Business Unit Of Lphd Sumur Kumbang
383.	Head Of KUPS Soponyono	Business Unit Of Lphd Totoharjo
384.	Head Of Totoharjo/Keripik Pisang	Business Unit Of Lphd Totoharjo
385.	Head Of KUPS Maju Mandiri	Business Unit Of Lphd Totoharjo
386.	Head Of KUPS Kusuma Jaya	Business Unit Of Lphd Totoharjo
387.	Head Of KUPS Kopi	Business Unit Of Lphd Totoharjo
388.	Head Of KUPS Puncak Pematang	Business Unit Of Gapoktanhut Wono Asri
389.	Head Of KUPS Pucuk Hijau	Business Unit Of Gapoktanhut Wono Asri
390.	Head Of KUPS Makmur Jaya Mandiri	Business Unit Of Gapoktanhut Wono Asri
391.	Head Of KUPS Pematang Indah	Business Unit Of Gapoktanhut Wono Asri
392.	Head Of KUPS Lingkar Berkah	Business Unit Of Gapoktanhut Wono Asri
393.	Head Of KUPS Tanjung Sembilang	Business Unit Of KTH Hijau Lestari
394.	Head Of KUPS Kuala Jaya	Business Unit Of KTH Hijau Lestari
395.	Head Of KUPS Krispi Bilis	Business Unit Of KTH Hijau Lestari
396.	Head Of KUPS Rebon Lestari Sejahtera	Business Unit Of KTH Lestari Jaya

No	Position	Institution/ Organization
397.	Head Of KUPS Bunut Selatan	Business Unit Of KTH Lestari Jaya
398.	Head Of KUPS Baru - Lphd Betung	Business Unit Of Lphd Betung
399.	Head Of KUPS Umbul Randu	Business Unit Of Lphd Kota Guring
400.	Head Of KUPS Baru - Lphd Tanjung Gading	Business Unit Of Lphd Tanjung Gading
401.	Head Of KUPS Mulya Jaya	Business Unit Of Gapoktanhut Mandala Asri
402.	Head Of KUPS Ternak Jaya	Business Unit Of Gapoktanhut Mandala Asri
403.	Head Of KUPS Melati	Business Unit Of Gapoktanhut Mandala Asri
404.	Head Of KUPS Mekar Sari	Business Unit Of Gapoktanhut Mandala Asri
405.	Head Of KUPS Lestari Jaya	Business Unit Of KTH Mitra Sejahtera
406.	Head Of KUPS Cihis Indah	Business Unit Of Lphd Cugung
407.	Head Of KUPS Jagat Indah	Business Unit Of Lphd Cugung
408.	Head Of KUPS Karya Bersama	Business Unit Of Lphd Padan
409.	Head Of KUPS Jasling Bunapel	Business Unit Of Lphd Padan
410.	Head Of KUPS Pesona Bunapel	Business Unit Of Lphd Padan
411.	Head Of KUPS Penengahan Indah	Business Unit Of Lphd Penengahan
412.	Head Of KUPS Rajabasa Lestari	Business Unit Of Lphd Rajabasa
413.	Head Of KUPS Pala Rajabasa	Business Unit Of Lphd Rajabasa
414.	Head Of KUPS Rajabasa Jaya	Business Unit Of Lphd Rajabasa
415.	Head Of KUPS Air Terjun Way Tayas Lestari	Business Unit Of Lphd Sukaraja
416.	Head Of KUPS Rahayu Sentosa Lestari	Business Unit Of Lphd Sukaraja
417.	Head Of KUPS Darma Ayu Lestari	Business Unit Of Lphd Sukaraja
418.	Head Of KUPS Tani Mulya 2	Business Unit Of Lphd Way Kalam
419.	Head Of KUPS Mawar Bodas	Business Unit Of Lphd Way Kalam
420.	Head Of KUPS Tani Mulya	Business Unit Of Lphd Way Kalam
421.	Head Of KUPS Sumber Rezeki	Business Unit Of Lphd Way Kalam
422.	Head Of KUPS Sadar Wisata	Business Unit Of Lphd Way Kalam
423.	Head Of KUPS Gula Aren	Business Unit Of Lphd Way Kalam
424.	Head Of KUPS Batu Lebah	Business Unit Of Lphd Way Muli
425.	Head Of KUPS Ternak Jaya Makmur	Business Unit Of Gapoktanhut Kelaten Jaya Makmur
426.	Head Of KTH Bukit Hijau	Business Unit Of KTH Bukit Hijau
427.	Head Of KUPS Mekar Jaya	Business Unit Of Lphd Banding
428.	Head Of KUPS Madu Baja	Business Unit Of Lphd Banding

No	Position	Institution/ Organization
429.	Head Of KUPS Seandanan	Business Unit Of Lphd Canggung
430.	Head Of Lphd Canti	Business Unit Of Lphd Canti
431.	Head Of KUPS Putak	Business Unit Of Lphd Jondong
432.	Head Of KUPS Betung Balak	Business Unit Of Lphd Jondong
433.	Head Of KUPS Lelayang	Business Unit Of Lphd Jondong
434.	Head Of KUPS Bunian	Business Unit Of Lphd Jondong
435.	Head Of KUPS Maju Bersama	Business Unit Of Lphd Kecapi
436.	Head Of KUPS Kekarik	Business Unit Of Lphd Kecapi
437.	Head Of KUPS Stengless Bee	Business Unit Of Lphd Kecapi
438.	Head Of KUPS Simpurn Helau	Business Unit Of Lphd Kecapi
439.	Head Of Cebbrenng	Business Unit Of Lphd Tanjung Heran
440.	Head Of KUPS Jami Waras 3	Business Unit Of Lphd Tanjung Heran
441.	Head Of KUPS Jami Waras 2	Business Unit Of Lphd Tanjung Heran
442.	Head Of KUPS Jati Mulya	Business Unit Of Lphd Tanjung Heran
443.	Head Of KUPS Kihara	Business Unit Of Lphd Tanjung Heran
444.	Head Of KUPS Jami Waras	Business Unit Of Lphd Tanjung Heran
445.	Head Of KUPS Batang Kejang	Business Unit Of Lphd Tengkujuh
BIMA DISTRICT AND CITY OF NTB PROVINCE		
446.	Head Of KTH La Wawo	Business Unit Of KTH La Wawo
447.	Head Of KTH Sama Ngawa	Business Unit Of KTH Sama Ngawa
448.	Head Of KTH Bina Bersama Mau	Business Unit Of KTH Bina Bersama
449.	Head Of KUPS Usaha Bersama	Business Unit Of KTH Serba Usaha Sera Lano
450.	Head Of KUPS Due Nggambi Makmur	Business Unit Of KTH Due Nggambi
451.	Head Of KUPS Mbohi Dungga Mawar	Business Unit Of KTH Due Nggambi
452.	Head Of KUPS Madu Parado	Business Unit Of KTH Due Nggambi
453.	Head Of KUPS Mori Dana	Business Unit Of KTH Kancoa Ompu Mau
454.	Head Of KUPS Doro Lestari	Business Unit Of KTH Kancoa Ompu Mau
455.	Head Of KUPS Parado Jao	Business Unit Of KTH Lanco Widu
456.	Head Of KUPS Oi Mori	Business Unit Of KTH Lanco Widu
457.	Head Of KUPS Mada La Nceko	Business Unit Of KTH Sori Nceko
458.	Head Of KUPS Sama Ngawa	Business Unit Of KTH Sori Nceko
459.	Head Of KUPS Sebuade	Business Unit Of KTH Sori Nceko

No	Position	Institution/ Organization
460.	Head Of KUPS Dana Me'e	Business Unit Of KTH Tolo Seli
461.	Head Of KUPS Caru Mori	Business Unit Of KTH Tolo Seli
462.	Head Of KTH Cakiwani Lestari	Business Unit Of KTH Cakiwani Lestari
463.	Head Of KUPS Curi Mori	Business Unit Of KTH Mada Oi Sanggopa
464.	Head Of KUPS Kasama Weki	Business Unit Of KTH Mada Oi Sanggopa
465.	Head Of KUPS Sebua Ade	Business Unit Of KTH Mada Oi Sanggopa
466.	Head Of KUPS Kasabua Ade	Business Unit Of KTH Rengge Ompu Ra
467.	Head Of KUPS Meci Angi	Business Unit Of KTH Rengge Ompu Soda
468.	Head Of KUPS Kantika Sama	Business Unit Of KTH Rengge Ompu Soda
469.	Head Of KUPS Kajao Doro	Business Unit Of KTH Rongge
470.	Head Of KUPS Mdu Parewa	Business Unit Of KTH Sera Ati
471.	Head Of KUPS Parewa Lestari	Business Unit Of KTH Sera Ati
472.	Head Of KUPS Puncak Parewa	Business Unit Of KTH Sera Ati
473.	Head Of KTH Rapahanda	Business Unit Of KTH Rapahanda
474.	Head Of KTH Wadu Mee	Business Unit Of KTH Wadu Mee
475.	Head Of KUPS Sahabat Buah	Business Unit Of KTH Wadu Ncaka
476.	Head Of KUPS Herbal Sehat	Business Unit Of KTH Wadu Ncaka
477.	Head Of KUPS Usaha Tani Kita	Business Unit Of KTH Wadu Ncaka
478.	Head Of KTH Butu Dunga	Business Unit Of KTH Butu Dunga
479.	Head Of KUPS Woro Lestari	Business Unit Of KTH Serba Usaha Sera Lano
480.	Head Of KTH Dana Kala	Business Unit Of KTH Dana Kala
481.	Head Of KTH Kabela	Business Unit Of KTH Kabela
482.	Head Of KTH Monggo Romo	Business Unit Of KTH Monggo Romo
483.	Head Of KTH Wana Lestari	Business Unit Of KTH Wana Lestari
484.	Head Of KUPS Sawune	Business Unit Of KTH Donggo Nae
485.	Head Of KUPS Mata Sarae	Business Unit Of KTH Donggo Nae
486.	Head Of KUPS Donggo Nae Lestari	Business Unit Of KTH Donggo Nae
487.	Head Of KUPS Sori Kaleli	Business Unit Of KTH Ntala
488.	Head Of KUPS Toro Rupe	Business Unit Of KTH Ntala
489.	Head Of KUPS Toro Wa'e	Business Unit Of KTH Ntala
490.	Head Of KUPS Ntala Bersama	Business Unit Of KTH Ntala
491.	Head Of KTH So Lela Oi Mada	Business Unit Of KTH So Lela Oi Mada

No	Position	Institution/ Organization
492.	Head Of Gapoktan Nggahi Rawi Pahu	Business Unit Of Gapoktan Nggahi Rawi Pahu
493.	Head Of Hkm Kapari Lestari Kemiri	Business Unit Of KTH Kapari Lestari
494.	Head Of Hkm Kapari Lestari Kunyit	Business Unit Of KTH Kapari Lestari
495.	Head Of KTH Mada Nae	Business Unit Of KTH Mada Nae
496.	Head Of KTH Oi Rida	Business Unit Of KTH Oi Rida
497.	Head Of KTH Tonggo Tua Lestari	Business Unit Of KTH Tonggo Tua Lestari
498.	Head Of KUPS KTH Wadu Mara	Business Unit Of KTH Wadu Mara
499.	Head Of KUPS Mangge Mandiri	Business Unit Of Gapoktan Oi Ngari
500.	Head Of KUPS Harapan Mangge	Business Unit Of KTH Oi Bura Bersinar
501.	Head Of KTH Kajao Doro Cumpu	Business Unit Of KTH Kajao Doro Cumpu
502.	Head Of KTH So Inci Maci	Business Unit Of KTH So Inci Maci
503.	Head Of KUPS KTH So Kleli Hijau Royo	Business Unit Of KTH So Kleli Hijau Royo
504.	Head Of KUPS Doro Toi Abadi	Business Unit Of KTH Doro Toi Lestari
505.	Head Of KUPS Muna Mangawa	Business Unit Of KTH Hidirasa Lestari
506.	Head Of KUPS Madu Kuat Hidirasa	Business Unit Of KTH Hidirasa Lestari
507.	Head Of KUPS Kanggini Doro	Business Unit Of KTH Hidirasa Lestari
508.	Head Of KUPS Kemiri Mangawa	Business Unit Of KTH Kaworo Damai
509.	Head Of KUPS Madu Kaworo	Business Unit Of KTH Kaworo Damai
510.	Head Of KUPS Kajao Moro Doro	Business Unit Of KTH Kaworo Damai
511.	Head Of KUPS Madu Lapisu	Business Unit Of KTH Puncak Lapisu
512.	Head Of KUPS Lapisu Green	Business Unit Of KTH Puncak Lapisu
513.	Head Of KUPS Kahawa Kamina	Business Unit Of Gapoktan Doro Lingga
514.	Head Of KUPS Alpukat Kamina	Business Unit Of Gapoktan Doro Lingga
515.	Head Of KUPS Kamina Sejahtera	Business Unit Of KTH Dana Bura
516.	Head Of KUPS Sabia Nggira	Business Unit Of KTH Laju Tebe
517.	Head Of KUPS Lt Nggira	Business Unit Of KTH Laju Tebe
518.	Head Of KUPS Kawuwu Sejahtera	Business Unit Of KTH Nggela Puta
519.	Head Of KTH Pemuda Lampe Mandiri	Business Unit Of KTH Pemuda Lampe Mandiri
520.	Head Of KUPS So Dobu Kaba	Business Unit Of KTH Bersaudara
521.	Head Of KUPS So Dua Dali	Business Unit Of KTH Bersaudara
522.	Head Of Mbolo Weki	Business Unit Of KTH Bina Baru
523.	Head Of Tujuan Bersama	Business Unit Of KTH Bina Baru

No	Position	Institution/ Organization
524.	Head Of Musyawarah	Business Unit Of KTH Bina Baru
525.	Head Of Tujuan Bersama	Business Unit Of KTH Bina Baru
526.	Head Of Gotong Royong	Business Unit Of KTH Kapenta Nanga Nae
527.	Head Of Sama Rasa	Business Unit Of KTH Kapenta Nanga Nae
528.	Head Of KUPS Kerjasama	Business Unit Of KTH Kapenta Nanga Nae
529.	Head Of Kapenta Bura	Business Unit Of KTH Kapenta Nangananae
530.	Head Of Kapenta Mee	Business Unit Of KTH Kapenta Nangananae
531.	Head Of Kapenta Kala	Business Unit Of KTH Kapenta Nangananae
532.	Head Of Kerjasama	Business Unit Of KTH Kapenta Nangananae
533.	Head Of KUPS So Weri	Business Unit Of KTH Monggo Lewi
534.	Head Of KUPS So Oi Pu	Business Unit Of KTH Monggo Lewi
535.	Head Of KTH Oi Rida Lestari	Business Unit Of KTH Oi Rida Lestari
536.	Head Of KTH So Tolongga Raya	Business Unit Of KTH So Tolongga Raya
537.	Head Of KUPS Bibit Buah Batawani	Business Unit Of Gapoktan Batawawi
538.	Head Of KUPS Mente Gapoktan Batawawi	Business Unit Of Gapoktan Batawawi
539.	Head Of Gapoktan Hambua Nanga	Business Unit Of Gapoktan Hambua Nanga
540.	Head Of KUPS Bersaudara	Business Unit Of Gapoktan Meci Angi
541.	Head Of KUPS Gapoktan Meci Angi	Business Unit Of Gapoktan Meci Angi
542.	Head Of KTH Hambua Nangga	Business Unit Of KTH Hambua Nanga
543.	Head Of KUPS Wanatani Piri Nangga	Business Unit Of KTH Piri Nangga
544.	Head Of KTH So Doncu	Business Unit Of KTH So Doncu
545.	Head Of KTH So Plampi	Business Unit Of KTH So Plampi
546.	Head Of So Rade	Business Unit Of KTH So Rade
547.	Head Of KUPS Wanatani So Wadu Pela	Business Unit Of KTH So Wadu Pela
548.	Head Of KUPS Kawinda Toa'li	Business Unit Of Pemerintah Desa Kawinda Toa'li
WEST HALMAHERA OF NORTH MALUKU PROVINCE		
549.	Head Of KTH Mariolaha	Business Unit Of KTH Mariolaha
550.	Head Of KUPS Ma'liu Rion	Business Unit Of LD Dere
551.	Head Of KUPS likon Maciwir	Business Unit Of LD Dere
552.	Head Of KUPS Banyo Sa'i	Business Unit Of LD Goro-Goro
553.	Head Of KUPS Ma'plegor	Business Unit Of LD Goro-Goro
554.	Head Of KUPS Oro'u Bato	Business Unit Of LD Goro-Goro

No	Position	Institution/ Organization
555.	Head Of LD Sasur	Business Unit Of LD Sasur
556.	Head Of KUPS Sa'mareu	Business Unit Of LD Sasur Pantai
557.	Head Of KUPS Batiawol	Business Unit Of LD Sasur Pantai
558.	Head Of KUPS Koperasi Rian Pratama Lestari	Business Unit Of Koperasi Rian Pratama Lestari
559.	Head Of KUPS Payo-Payo	Business Unit Of Payo
560.	Head Of KUPS Kiguru Jaya	Business Unit Of LD Bukumatiti
561.	Head Of KUPS Lembah Hijau	Business Unit Of LD Bukumatiti
562.	Head Of KUPS LD Matui	Business Unit Of LD Matui
563.	Head Of KUPS Esa Moi	Business Unit Of LD Todowongi
564.	Head Of KUPS Singina Moi	Business Unit Of LD Todowongi
565.	Head Of KUPS Hutan Nipah	Business Unit Of Lphd Tuada
566.	Head Of KUPS Mangrove Tuada Indah	Business Unit Of Lphd Tuada
567.	Head Of KUPS Tuada Maju	Business Unit Of Lphd Tuada
568.	Head Of KUPS Tuada Setara	Business Unit Of Lphd Tuada
569.	Head Of KUPS Gula Aren Tuada Mandiri	Business Unit Of Lphd Tuada
570.	Head Of KUPS Sagu Tuada Akepulo	Business Unit Of Lphd Tuada
571.	Head Of KUPS Pala Ulo Mari Moi	Business Unit Of Lphd Ulo
572.	Head Of KUPS To Ngone	Business Unit Of Lphd Ulo
573.	Head Of KUPS Rotan Ulo Jaya	Business Unit Of Lphd Ulo
574.	Head Of KUPS Madu Hutan Ulo Abadi	Business Unit Of Lphd Ulo
575.	Head Of KUPS Gula Aren Ulo Singina Moi	Business Unit Of Lphd Ulo
576.	Head Of KUPS Cengkeh Ulo Mandiri	Business Unit Of Lphd Ulo
577.	Head Of KUPS Partada	Business Unit Of LD Aketola
578.	Head Of KUPS Durungatu	Business Unit Of LD Aketola
579.	Head Of KUPS Masiogor	Business Unit Of LD Awer
580.	Head Of KUPS Gola Tanah Rata	Business Unit Of LD Awer
581.	Head Of KUPS Ruba Bangan	Business Unit Of LD Idamdehe Gamsungi
582.	Head Of KUPS Danong La'la	Business Unit Of LD Idamdehe Gamsungi
583.	Head Of KUPS KTH. Ngara'a Mala'o	Business Unit Of LD Tibobo
584.	Head Of KUPS KTH. Ba'nyo Sepe	Business Unit Of LD Tibobo
585.	Head Of KUPS Ngene Mari Moi	Business Unit Of LD Adu
586.	Head Of KUPS Rera Moi	Business Unit Of LD Adu

No	Position	Institution/ Organization
587.	Head Of KUPS Ino Ma Polu	Business Unit Of LD Jere
588.	Head Of KUPS Iâ€™Or Noâ€™Ngodu	Business Unit Of LD Jere
589.	Head Of KUPS LD Nanas	Business Unit Of LD Nanas
590.	Head Of LD Ngawet	Business Unit Of LD Ngawet
591.	Head Of KUPS Boci Marera	Business Unit Of Lphd Tabobol
592.	Head Of KUPS Igon Magonyo	Business Unit Of Lphd Tabobol
593.	Head Of KUPS Gusuwong	Business Unit Of KTH Karya Sahu
594.	Head Of KUPS Lelepa Indah	Business Unit Of KTH Karya Sahu
595.	Head Of KUPS Tigar	Business Unit Of KTH Karya Sahu
596.	Head Of KUPS Talor	Business Unit Of KTH Karya Sahu
597.	Head Of KUPS Mau Dadalara	Business Unit Of KTH Mau Sigaro
598.	Head Of KUPS Talaga Rano	Business Unit Of KTH Mau Sigaro
599.	Head Of KUPS Kasih	Business Unit Of KTH Mau Sigaro
600.	Head Of KUPS Hino Ngene	Business Unit Of KTH Mau Sigaro
601.	Head Of KUPS Rion-Rion	Business Unit Of KTH Mau Sigaro
602.	Head Of KUPS Po Mariwo	Business Unit Of KTH Sarawiata
603.	Head Of KUPS Dodagi Moi	Business Unit Of KTH Sarawiata
604.	Head Of KUPS Kt. Langus	Business Unit Of KTH Wolo Ma Dowar
605.	Head Of KUPS Kt. Mico	Business Unit Of KTH Wolo Ma Dowar
606.	Head Of KUPS Kt. Tungutu	Business Unit Of KTH Wolo Ma Dowar
607.	Head Of KUPS Kt. Golar	Business Unit Of KTH Wolo Ma Dowar
608.	Head Of KUPS Kt. Cece A.	Business Unit Of KTH Wolo Ma Dowar
609.	Head Of KUPS Kt. Babason	Business Unit Of KTH Wolo Ma Dowar
610.	Head Of KUPS Kt. Mumar	Business Unit Of KTH Wolo Ma Dowar
611.	Head Of KUPS Taidudu	Business Unit Of Lphd Campaka
612.	Head Of KUPS Tiwal	Business Unit Of Lphd Campaka
613.	Head Of KUPS Dongka-Dongka	Business Unit Of LD Akelaha
614.	Head Of KUPS Pati Pelong	Business Unit Of LD Akelaha
615.	Head Of KUPS Mote Nyinga	Business Unit Of LD Akelamo Kao
616.	Head Of KUPS Rorano Nyinga	Business Unit Of LD Akelamo Kao
617.	Head Of KUPS Pinagara	Business Unit Of Lphd Akesahu
618.	Head Of KUPS Balautin	Business Unit Of Lphd Akesahu

No	Position	Institution/ Organization
619.	Head Of KUPS Nanga Harita	Business Unit Of LD Akeara
620.	Head Of KUPS Nanga Wowango	Business Unit Of LD Akeara
621.	Head Of KUPS Domsar	Business Unit Of LD Domato
622.	Head Of KUPS Fomapairi	Business Unit Of LD Domato
623.	Head Of KUPS Sinyinga Moi	Business Unit Of LD Tuguraci
624.	Head Of KUPS Ajeibaoro	Business Unit Of LD Tuguraci
625.	Head Of KUPS Lphd Kahatola	Business Unit Of Lphd Kahatola
626.	Head Of KUPS Pomasidebini	Business Unit Of Lphd Laba Besar
627.	Head Of KUPS Pomanarama	Business Unit Of Lphd Laba Besar
628.	Head Of KUPS Braha Maju	Business Unit Of LD Pesona Braha
629.	Head Of KUPS Singkanau	Business Unit Of LD Pesona Braha
630.	Head Of KUPS Uto Cengkeh	Business Unit Of LD Pesona Braha
631.	Head Of LD Rioribati	Business Unit Of LD Rioribati
632.	Head Of LD Tabadamai	Business Unit Of LD Tabadamai
633.	Head Of KUPS LD Tewe	Business Unit Of LD Tewe
634.	Head Of KUPS Macongawa	Business Unit Of KTH Cigiâ€™™Awa
635.	Head Of KUPS Makotale	Business Unit Of KTH Cigiâ€™™Awa
636.	Head Of KUPS Galaa Kolil	Business Unit Of KTH Gam Wanger
637.	Head Of KUPS Tacici Pala Mari Moy	Business Unit Of KTH Gam Wanger
638.	Head Of KUPS Maâ€™™U Isen	Business Unit Of LD Balisoan Utara
639.	Head Of KUPS Lo' Lom	Business Unit Of LD Balisoan Utara
640.	Head Of KUPS Reon	Business Unit Of LD Taraudu
641.	Head Of KUPS Sadigol	Business Unit Of LD Taraudu
642.	Head Of KUPS Aro Dadi	Business Unit Of LD Baru
643.	Head Of KUPS Sasadi Ahu	Business Unit Of LD Baru
644.	Head Of LD Gamsida	Business Unit Of LD Gamsida
645.	Head Of KUPS Kota Mareâ€™™U	Business Unit Of LD Ngalo-Ngalo
646.	Head Of KUPS Popolojo	Business Unit Of LD Ngalo-Ngalo
647.	Head Of Lphd Tosoa	Business Unit Of Lphd Tosoa
648.	Head Of LD Sidangoli Dehe	Business Unit Of LD Sidangoli Dehe
649.	Head Of LD Tauro	Business Unit Of LD Tauro
650.	Head Of KUPS Maku Sonyinga	Business Unit Of Lphd Tataleka

No	Position	Institution/ Organization
651.	Head Of KUPS Sarimalaha	Business Unit Of Lphd Tataleka
652.	Head Of KUPS Babari	Business Unit Of KTH Talaga Dalam
653.	Head Of KUPS Gam	Business Unit Of KTH Talaga Dalam
654.	Head Of KUPS Talaga	Business Unit Of KTH Talaga Dalam
655.	Head Of KUPS Gasas Ino	Business Unit Of LD Kie Ici
656.	Head Of KUPS Danau Indah	Business Unit Of LD Kie Ici
657.	Head Of LD Naga	Business Unit Of LD Naga
658.	Head Of LD Sarau	Business Unit Of LD Sarau
659.	Head Of LD Tuguis	Business Unit Of LD Tuguis
660.	Head Of KUPS Wagel	Business Unit Of Akediri
661.	Head Of KUPS Tamujaya	Business Unit Of Akediri
662.	Head Of KUPS Sagu Porniti	Business Unit Of LD Porniti
663.	Head Of KUPS Agroforestry Porniti	Business Unit Of LD Porniti
664.	Head Of KUPS Igo Matango	Business Unit Of Lphd Bobanehena
665.	Head Of KUPS Wisata Puncak Olle	Business Unit Of Lphd Bobanehena
666.	Head Of KUPS Nita Masose	Business Unit Of Lphd Idam Dehe
667.	Head Of KUPS Jara-Jara	Business Unit Of Lphd Idam Dehe
668.	Head Of Lphd Borona	Business Unit Of Lphd Borona
669.	Head Of KUPS Lphd Tolisaur	Business Unit Of Lphd Tolisaur
670.	Head Of KUPS Togoreba Bersama	Business Unit Of Lphd Togereba
671.	Head Of KUPS Maju Sejahtera	Business Unit Of Lphd Togereba
672.	Head Of KUPS Po Marimoi	Business Unit Of Pasalulu
673.	Head Of KUPS Tabakula	Business Unit Of Pasalulu
674.	Head Of KUPS Jano	Business Unit Of LD Jano
675.	Head Of KUPS Sininga Moi	Business Unit Of Lphd Laba Kecil
676.	Head Of KUPS Porigaho	Business Unit Of Lphd Laba Kecil
677.	Head Of KUPS Mari Bersatu	Business Unit Of KTH Maku Sonyinga
678.	Head Of KUPS Mari Membangun	Business Unit Of KTH Maku Sonyinga
679.	Head Of KUPS Niwi Padak	Business Unit Of LD Bangkit Rahmat
680.	Head Of KUPS Mo Tapso	Business Unit Of LD Bangkit Rahmat
681.	Head Of LD Bobaneigo	Business Unit Of LD Bobaneigo
	DOMPU DISTRICT OF NTB PROVINCE	

No	Position	Institution/ Organization
682.	Head Of KUPS Gapoktan Blok Lara	Business Unit Of Gapoktan Blok Lara
683.	Head Of KUPS Taurus Kampodu Moro	Business Unit Of Gapoktanhut Kampodu Moro
684.	Head Of KUPS Kemiri Ndano Woro	Business Unit Of Gapoktanhut Kampodu Moro
685.	Head Of KUPS Kampodu Moro Nusserly	Business Unit Of Gapoktanhut Kampodu Moro
686.	Head Of KUPS Doro Mbe'e Farm	Business Unit Of Gapoktanhut Kampodu Moro
687.	Head Of KUPS Wisata Kelok Kampodu Moro	Business Unit Of Gapoktanhut Kampodu Moro
688.	Head Of KUPS Occi Ompu Kibi	Business Unit Of Gapoktanhut Kampodu Moro
689.	Head Of KUPS Moringa Rora	Business Unit Of Gapoktanhut Kampodu Moro
690.	Head Of KUPS Jagpil Kampodu Moro	Business Unit Of Gapoktanhut Kampodu Moro
691.	Head Of Wanatani Sobu Kamau	Business Unit Of Gapoktanhut Pali Ncuni
692.	Head Of Wanatani So Sasonda	Business Unit Of Gapoktanhut Pali Ncuni
693.	Head Of Wanatani Tanju Karombo	Business Unit Of Gapoktanhut Pali Ncuni
694.	Head Of KUPS Mada Oi Kahoro Lestari	Business Unit Of KTH Mada Oi Kahoro
695.	Head Of KUPS Mada Oi Mposu Mandiri	Business Unit Of KTH Mada Oi Mposu
696.	Head Of KUPS O'o Rui Lestari	Business Unit Of KTH Oo Rui
697.	Head Of KUPS Rengge Ndimba Bersinar	Business Unit Of KTH Rengge Ndimba
698.	Head Of Wanatani Soi Oi Mao	Business Unit Of KTH So Oi Mao
699.	Head Of KUPS Sori Kalate Bersinar	Business Unit Of KTH Sori Kalate
700.	Head Of KUPS Sori Mango Lestari	Business Unit Of KTH Sori Mango
701.	Head Of Wanatani Wadu Jamba	Business Unit Of KTH Wadu Jamba
702.	Head Of KUPS Wanatani So Mada Ramba	Business Unit Of Gapoktanhut So Cenna Maju
703.	Head Of KUPS Wanatani So Mada Oi Wau	Business Unit Of Gapoktanhut So Cenna Maju
704.	Head Of KUPS Wanatani So Sori Fo'o Bersinar	Business Unit Of Gapoktanhut So Cenna Maju
705.	Head Of KTH Mada Kamau	Business Unit Of KTH Mada Kamau
706.	Head Of KTH Rengge La Ajis	Business Unit Of KTH Rengge La Ajis
707.	Head Of KTH So Kadondo	Business Unit Of KTH So Kadondo
708.	Head Of KUPS Sonco Saba Permai	Business Unit Of KTH Sonco Saba
709.	Head Of KUPS Curi Mori	Business Unit Of KTH Tekasire
710.	Head Of KUPS Wanatani Doro To'i	Business Unit Of KTH Air Terjun
711.	Head Of KTH Ncai Titi	Business Unit Of KTH Ncai Titi
712.	Head Of KUPS Wanatani Sori Dungga	Business Unit Of KTH Wadu Nae
713.	Head Of KTH Benteng Bersinar	Business Unit Of KTH Benteng Bersinar

No	Position	Institution/ Organization
714.	Head Of KUPS Wanatani Donggo Wonca	Business Unit Of KTH Donggo Wonca
715.	Head Of KTH Mada Oi Parafu	Business Unit Of KTH Mada Oi Parafu
716.	Head Of KTH Mada Oi Teka	Business Unit Of KTH Mada Oi Teka
717.	Head Of Kbr Al-Azis	Business Unit Of KTH Meci Angi
718.	Head Of KUPS Meci Angi Agro	Business Unit Of KTH Meci Angi
719.	Head Of KTH Mumbu Lestari	Business Unit Of KTH Mumbu Lestari
720.	Head Of KTH Pidu Riwa	Business Unit Of KTH Pidu Riwa
721.	Head Of KTH Uju Kalubu	Business Unit Of KTH Uju Kalubu
722.	Head Of KUPS Wanatani Rengge Cicompe	Business Unit Of KTH Wombo Rengge Kala
723.	Head Of KTH Doro Manggini	Business Unit Of KTH Doro Manggini
724.	Head Of KUPS Oi Kampasi	Business Unit Of KTH Mada Oi Kampasi
725.	Head Of KUPS Oi Neni Jaya	Business Unit Of KTH Oi Neni Sori Mango
726.	Head Of KTH Sori Mango	Business Unit Of KTH Sori Mango
727.	Head Of KUPS Gapoktan Hkm Blok Tolokalo	Business Unit Of Gapoktan Hkm Blok Tolokalo
728.	Head Of KUPS Gapoktan Hkm Blok Kesi/Tolokalo	Business Unit Of Gapoktan Hkm Blok Kesi/Tolokalo
729.	Head Of KTH Taa Sejahtera	Business Unit Of KTH Taa Sejahtera
730.	Head Of Gapoktan Hkm	Business Unit Of Gapoktan Hkm
731.	Head Of KUPS Wanatani Mada Mbela	Business Unit Of KTH Mada Mbela
732.	Head Of KTH Doro Lameri	Business Unit Of KTH Doro Lameri
733.	Head Of KUPS Baru	Business Unit Of KTH Doro Moro
734.	Head Of KUPS Wana Tani Mada Oi Fanda	Business Unit Of KTH Mada Oi Fanda
735.	Head Of KTH Risu Maju	Business Unit Of KTH Risu Maju
736.	Head Of KTH So Dampo Ruhu	Business Unit Of KTH So Dampo Ruhu
737.	Head Of KUPS Wana Tani Kapupu	Business Unit Of KTH So Kapupu
738.	Head Of KUPS So Raure Maju Bersama	Business Unit Of KTH So Raure
739.	Head Of KUPS Wana Tani Sonco Mbowo	Business Unit Of KTH Sonco Mbowo
740.	Head Of KUPS Wana Tani Wadu Nonto	Business Unit Of KTH Wadu Nonto
741.	Head Of Kt Hkm Wadu Bedi	Business Unit Of Kt Hkm Wadu Bedi
742.	Head Of KTH Campa Lestari	Business Unit Of KTH Campa Lestari
743.	Head Of KUPS Wana Tani Doro Naru	Business Unit Of KTH Doro Naru
744.	Head Of KTH Kengge Rasa	Business Unit Of KTH Kengge Rasa

No	Position	Institution/ Organization
745.	Head Of KTH La Pompo	Business Unit Of KTH La Pompo
746.	Head Of KTH Manggemaci 1	Business Unit Of KTH Manggemaci 1
747.	Head Of KUPS Wanatani Muncul Baru	Business Unit Of KTH Muncul Baru
748.	Head Of KTH Ompu Sabe	Business Unit Of KTH Ompu Sabe
749.	Head Of KUPS Woko Wali	Business Unit Of KTH So Karonggo
750.	Head Of KTH Tani Bersinar	Business Unit Of KTH Tani Bersinar
751.	Head Of KTH Wadu Panta	Business Unit Of KTH Wadu Panta
752.	Head Of Gapoktan So Lalembo	Business Unit Of Gapoktan So Lalembo
753.	Head Of KUPS Baru	Business Unit Of KTH Doro Bente
754.	Head Of KUPS Wanatani Ncai Rongga	Business Unit Of KTH Doro Mboha
755.	Head Of KUPS Wana Tani Doro Wila	Business Unit Of KTH Doro Wila
756.	Head Of KUPS Wanatani Terowongan Dua	Business Unit Of KTH Terowongan Dua
757.	Head Of KUPS So Butu Kapi	Business Unit Of KTH So Butu Kapi
758.	Head Of Gapoktan Karamabura	Business Unit Of Gapoktan Karamabura
759.	Head Of Ksu Swadaya	Business Unit Of Ksu Swadaya Lpmp Dompur
760.	Head Of KUPS Mori Sama	Business Unit Of KTH Foo Mbolo
761.	Head Of KUPS Ncuri Mori	Business Unit Of KTH Ncai Ama Nofi
762.	Head Of KTH So Donggo Luhu	Business Unit Of KTH So Donggo Luhu
763.	Head Of KTH So Kapi Na'e	Business Unit Of KTH So Kapi Nae
764.	Head Of KTH So Mada Rowa	Business Unit Of KTH So Mada Rowa
765.	Head Of KUPS Teka Mori	Business Unit Of KTH Teka Luhu
766.	Head Of KUPS Baru	Business Unit Of KTH Butu Kadera
767.	Head Of KUPS Diwu Ncuna	Business Unit Of KTH Diwu Ncuna
768.	Head Of KTH Diwu Nocu	Business Unit Of KTH Diwu Nocu
769.	Head Of KUPS Baru	Business Unit Of KTH Doro Pataha
770.	Head Of KTH Mekar Baru	Business Unit Of KTH Mekar Baru
771.	Head Of KUPS Ncai Ompu Beda	Business Unit Of KTH Ncai Ompu Beda
772.	Head Of KTH Ncai Tolo Wodi	Business Unit Of KTH Ncai Tolo Wodi
773.	Head Of KUPS Ngari Dompur	Business Unit Of KTH Ngari Dompur
774.	Head Of KUPS Ompu Dali	Business Unit Of KTH Ompu Dali
775.	Head Of KUPS So Soke	Business Unit Of KTH So Soke
776.	Head Of KTH Sori Rako	Business Unit Of KTH Sori Rako

No	Position	Institution/ Organization
777.	Head Of KTH Angin Tawari	Business Unit Of KTH Angin Tawari
778.	Head Of KTH Bina Sejahtera	Business Unit Of KTH Bina Sejahtera
779.	Head Of KUPS Wana Tani Doro Naru Dua	Business Unit Of KTH Doro Naru Dua
780.	Head Of KTH Leta Sori Bura	Business Unit Of KTH Leta Sori Bura
781.	Head Of KTH Semangat Baru	Business Unit Of KTH Semangat Baru
782.	Head Of KTH So Doro Naru	Business Unit Of KTH So Doro Naru
783.	Head Of KUPS Ncuri Ncau	Business Unit Of KTH Sonco Ama Sunu
784.	Head Of KUPS Wana Tani Sori Kandeï	Business Unit Of KTH Sori Kandeï
785.	Head Of KUPS Wanatani Sori Mila	Business Unit Of KTH Sori Mila
786.	Head Of KTH Tawari Jaya	Business Unit Of KTH Tawari Jaya
787.	Head Of KTH So Ati Lembo	Business Unit Of KTH So Ati Lembo
788.	Head Of KTH So Doro Naru	Business Unit Of KTH So Doro Naru
789.	Head Of KTH Sonco Ama Sunu	Business Unit Of KUPS Ncuri Ncau
790.	Head Of KTH Sori Kandeï	Business Unit Of KUPS Wana Tani Sori Kandeï
791.	Head Of KTH Sori Mila	Business Unit Of KUPS Wanatani Sori Mila
792.	Head Of KTH Tawari Jaya	Business Unit Of KTH Tawari Jaya
793.	Head Of KTH So Ati Lembo	Business Unit Of KTH So Ati Lembo

No.	Title	Format of activities/ publications	Media	Date of release	link
A	Article and infographic				
1	Group Profile: LPHD Way Kalam	Infographic	Instagram	04-Jan	https://www.instagram.com/p/C1rCnVmvSlS/?utm_source=ig_web_copy_link&igsh=MzRIODBiNWFIZA==
2	Group Profile: LPHN Taram	Infographic	Instagram	09-Jan	https://www.instagram.com/p/C137ahZPr-a/?utm_source=ig_web_copy_link&igsh=MzRIODBiNWFIZA==
3	Farmers in West Sumatra's income significantly increased in the last 3 years	Infographic	Instagram	11-Jan	https://www.instagram.com/p/C19IEnlv86q/?utm_source=ig_web_copy_link&igsh=MzRIODBiNWFIZA==
4	Let's get to know IAD in social forestry	Infographic	Instagram	18-Jan	https://www.instagram.com/p/C2PFrUzvsL3/?utm_source=ig_web_copy_link&igsh=MzRIODBiNWFIZA==
5	The year 2050 is predicted to be unable to drink local coffee	Infographic	Instagram	23-Jan	https://www.instagram.com/p/C2b_T7wPWa_/?utm_source=ig_web_copy_link&igsh=MzRIODBiNWFIZA==
6	Funfact: 5 trees with the highest carbon absorption	Infographic	Instagram	24-Jan	https://www.instagram.com/p/C2ejssGv6CC/?utm_source=ig_web_copy_link&igsh=MzRIODBiNWFIZA==
7	Let's get to know social forestry: Classification of KUPS (Social Forestry Business Groups)	Infographic	Instagram	26-Jan	https://www.instagram.com/p/C2jueM-PLlc/?utm_source=ig_web_copy_link&igsh=MzRIODBiNWFIZA==
8	Funfact about climate change issue	Infographic	Instagram	30-Jan	https://www.instagram.com/p/C2t_WV2vuuL/?utm_source=ig_web_copy_link&igsh=MzRIODBiNWFIZA==
9	Meeting to Discuss the Annual Working Plan (AWP) of the SSF Project 2024 to 2026	Infographic	Instagram	01-Feb	https://www.instagram.com/p/C2zMZGqPAQv/?utm_source=ig_web_copy_link&igsh=MzRIODBiNWFIZA==
10	SSF Project achievement as of January 2024	Infographic	Instagram	12-Feb	https://www.instagram.com/p/C3PexWHvxLY/?utm_source=ig_web_copy_link&igsh=MzRIODBiNWFIZA==
11	KUPS achievements in the SSF project locus	Infographic	Instagram	15-Feb	https://www.instagram.com/p/C3XLOqoviOL/?utm_source=ig_web_copy_link&igsh=MzRIODBiNWFIZA==

No.	Title	Format of activities/ publications	Media	Date of release	link
12	Did you know?: How concerned are young people about environmental issues?	Infographic	Instagram	16-Feb	https://www.instagram.com/p/C3ZxEacPpTO/?utm_source=ig_web_copy_link&igsh=MzRIODBiNWFIZA==
13	Let's get to know Social Forestry: What is RKPS (Social Forestry Management Plan)	Infographic	Instagram	22-Feb	https://www.instagram.com/p/C3pQQIOPbKh/?utm_source=ig_web_copy_link&igsh=MzRIODBiNWFIZA==
14	Workshop on the Preparation for the Implementation of the SSF Project in 2024 and Planning for 2025	Infographic	Instagram	23-Feb	https://www.instagram.com/p/C3r1nzUPoez/?utm_source=ig_web_copy_link&igsh=MzRIODBiNWFIZA==
15	Training on Strengthening Safeguard Implementation	Infographic	Instagram	14-Mar	https://www.instagram.com/p/C4fKVCHPrRA/?utm_source=ig_web_copy_link&igsh=MzRIODBiNWFIZA==
16	Meeting on the Discussion of Greenhouse Gas (GHG) Emission Mitigation Analysis	Infographic	Instagram	15-Mar	https://www.instagram.com/p/C4hwAOGv MF/?utm_source=ig_web_copy_link&igsh=MzRIODBiNWFIZA==
17	Social, Economic, and Environmental Survey	Infographic	Instagram	28-Mar	https://www.instagram.com/p/C5DV1HTPS4b/?utm_source=ig_web_copy_link&igsh=MzRIODBiNWFIZA==
18	Carving Justice in the Forest: The Importance of Gender Mainstreaming in Social Forestry	Infographic	Instagram	17-Apr	https://www.instagram.com/p/C526QTzvzq8/?utm_source=ig_web_copy_link&igsh=MzRIODBiNWFIZA==
19	Social Forestry in Indonesia: Preserving the Environment and Driving the Local Economy	Infographic	Instagram	18-Apr	https://www.instagram.com/p/C55aEWgvsax/?utm_source=ig_web_copy_link&igsh=MzRIODBiNWFIZA==
20	The Role of KUPS in Supporting Economic Sustainability	Infographic	Instagram	19-Apr	https://www.instagram.com/p/C58KP1-P2cc/?utm_source=ig_web_copy_link&igsh=MzRIODBiNWFIZA==
21	Social Forestry: Resolving Tenurial Conflicts for Mutual Welfare	Infographic	Instagram	23-Apr	https://www.instagram.com/p/C6GQRXCv-uO/?utm_source=ig_web_copy_link&igsh=MzRIODBiNWFIZA==
22	We're Hiring Now: Junior Safeguard	Infographic	Instagram	24-Apr	https://www.instagram.com/p/C6IaRf2vrJs/?utm_source=ig_web_copy_link&igsh=MzRIODBiNWFIZA==

No.	Title	Format of activities/ publications	Media	Date of release	link
23	5 Fun Fact: Agroforestri in the context of Social Forestry	Infographic	Instagram	30-Apr	https://www.instagram.com/p/C6YSNLgPwM4/?next=%2F&img_index=1
24	Food Security Buffer of West Halmahera	Article	Website	19-May	https://ssf-pskl.id/article/8
25	Meeting to Discuss the Results of the IAD Masterplan Document Preparation	Internal	Website	19-May	https://ssf-pskl.id/internal/4
26	Follow-up meeting for the Mid Term Review	Internal	Website	19-May	https://ssf-pskl.id/internal/3
27	The Role of KUPS in Supporting Economic Sustainability	News	Website	19-May	https://ssf-pskl.id/news/14
28	Workshop on Planning and Preparation for the Implementation of the SSF Project Activities in 2024	Internal	Website	20-May	https://ssf-pskl.id/internal/2
29	Training Activity on Strengthening Safeguard Implementation in Bima and Dompu Districts	Feature Story	Website	20-May	https://ssf-pskl.id/feature_story/4
30	Carving Justice in the Forest: The Importance of Gender Mainstreaming in Social Forestry	Article	Website	20-May	https://ssf-pskl.id/article/7
31	Social Forestry: Resolving Tenurial Conflicts for Mutual Welfare	Article	Website	20-May	https://ssf-pskl.id/article/6
32	The 18th ASEAN Working Group on Social Forestry Meeting	News	Website	20-May	https://ssf-pskl.id/news/13
33	Social Forestry: A Pillar Supporting Sustainable Forest Management	Infographic	Instagram	20-May	https://www.instagram.com/p/C7Lz_7sPNus/?utm_source=ig_web_copy_link&igsh=MzRIODBiNWFIZA==

No.	Title	Format of activities/ publications	Media	Date of release	link
34	Getting to Know the SSF Project	Motion graphic	Instagram	28-May	https://www.instagram.com/reel/C7gc3DdvOPL/?utm_source=ig_web_copy_link&igsh=MzRIODBiNWFIZA==
35	Social Forestry for Sustainable Forest	Infographic	Instagram	31-May	https://www.instagram.com/p/C7oI8KNv5F/?next=%2F
36	Empowering Communities, Sustaining Forest	Infographic	Instagram	11-Jun	https://www.instagram.com/p/C8EZOVVvPBb/?utm_source=ig_web_copy_link&igsh=MzRIODBiNWFIZA==
37	United for Nature: Society and Forests in Harmony	Infographic	Instagram	01-Jul	https://www.instagram.com/p/C839jDHPzPS/?utm_source=ig_web_copy_link&igsh=MzRIODBiNWFIZA==
38	We're Hiring Now: Project Leader & Community Investment Specialist	Infographic	Instagram	17-Jul	https://www.instagram.com/p/C9hJslkBI18/?utm_source=ig_web_copy_link&igsh=MzRIODBiNWFIZA==
39	Transforming Raw Materials into Value: KUPS Berkah Jaya's Efforts to Enhance the Selling Value of Non-Timber Forest Products	Feature Story	Website & Instagram	08-Sep	https://ssf-pskl.id/feature_story/6
40	Workshop Popular Article Writing on Social Forestry Strengthening Project	News	Website & Instagram	08-Sep	https://ssf-pskl.id/news/16
41	Coordination and Assistance in the Sub Project Management Unit in West Halmahera	Internal	Website & Instagram	08-Sep	https://ssf-pskl.id/internal/5
42	Coordination and Assistance SPMU in order to accelerate Target Achievement of SSF Project in Regency/City of Bima	Internal	Website & Instagram	08-Sep	https://ssf-pskl.id/internal/6
43	Success in Achieving Target: Latest News from SSF Project	News	Website & Instagram	08-Sep	https://ssf-pskl.id/news/17
44	Vital Role of Assistance in Success of Social Forestry	Article	Website & Instagram	08-Sep	https://ssf-pskl.id/article/9
45	Social Forestry: Supporting Pillar of Sustainable Forest Management	Article	Website	08-Sep	https://ssf-pskl.id/article/10

No.	Title	Format of activities/ publications	Media	Date of release	link
46	Developing Coconut Potential in Bukumatiti Village	Article		08-Sep	https://ssf-pskl.id/article/11
47	The Wonders Behind Harmony Between Local Community and Forest Sustainability: Social Forestry	Article	Website & Instagram	08-Sep	https://ssf-pskl.id/article/12
48	Implementation Support Mission Meeting September 2024	News	Website & Instagram	24-Sep	https://ssf-pskl.id/news/25
B	Video				
1	Field Trip to West Halmahera	Short video	Youtube	04-Jan	https://www.youtube.com/watch?v=ytfNW2Lc8-U&ab_channel=SSFProject
2	Agroforestry in Social Forestry (Aulia Perdana-ICRAF)	Videoclip	Youtube	20-Apr	https://www.youtube.com/watch?v=nbcEn2IO-rA
3	I am Social Forester: Chief of Todowongi Village Profile	Short video	Instagram	22-Apr	https://www.instagram.com/p/C6D1vZ6Pvys/?next=%2F
4	I am Social Forester: Profile of LPHD Bakumatiti (positive impact on SSF project assistance)	Short video	Instagram	03-May	https://www.instagram.com/p/C6gAiUKPzUA/?next=%2F
5	I am Social Forester: Fond of Planting KTH Karya Sahu	Short video	Instagram	07-Jun	https://www.instagram.com/reel/C76FwQ7vHtn/?utm_source=ig_web_copy_link&igsh=MzRIODBiNWFIZA==
6	Workshop on Synergy in Social Forestry: Realizing Justice in Land Management for Communities	Videoclip	Youtube	20-Jun	https://www.youtube.com/watch?v=cDIDp9OXi58
7	I am Social Forester: Profile of LPHD Todowongi (positive impact on SSF project assistance)	Short video	Instagram	02-Jul	https://www.instagram.com/reel/C86kXz2v8vC/?utm_source=ig_web_copy_link&igsh=MzRIODBiNWFIZA==

No.	Title	Format of activities/ publications	Media	Date of release	link
8	I am Social Forester: KUPS Sekar Sari Profile (positive impact on SSF project assistance)	Short video	Instagram	10-Aug	https://www.instagram.com/reel/C-eoomQPEvK/?utm_source=ig_web_copy_link&igsh=MzRIODBiNWFIZA==
C	Collaboration with Key Opinion Leader				
1	Sneaking a glimpse of the beauty of Eastern Indonesia, West Halmahera, North Maluku	Short Video	Instagram & Tiktok	22-Mar	https://www.instagram.com/reel/C4znVYnP-Kx/?utm_source=ig_web_copy_link&igsh=MzRIODBiNWFIZA== https://www.tiktok.com/@ardin_risandi/video/7348750243313372422
2	Claiming to be a climber but destroying the forest	Short video	Tiktok	28-Mar	https://www.tiktok.com/@muludhidayattdt/video/7351283623464652037
3	Natural wealth in West Halmahera Regency	Infographic	Instagram	25-Mar	https://www.instagram.com/p/C47pxK_LjFR/?utm_source=ig_web_copy_link&igsh=MzRIODBiNWFIZA==
4	Social Forestry in South Lampung	Short Video	Instagram	22-Sep	https://www.instagram.com/p/DANlxdxyhFf/?next=%2F
5	The Condition of Forests in Western Indonesia	Short video	Instagram & Tiktok	22-Sep	https://www.instagram.com/reel/DAN-YeKSI9u/?utm_source=ig_web_copy_link&igsh=MzRIODBiNWFIZA== https://www.tiktok.com/@nikitaalfian/video/7417437583682194693
6	Megatrust, are Forest fires increasing? SSF Project is the solution	Short video	Tiktok	24-Sep	https://www.tiktok.com/@awaanstory/video/7418105184708037893
7	The natural wealth in Indonesia is endless	Infographic	Instagram	26-Sep	https://www.instagram.com/p/DAX6qm8yQch/?next=%2F&img_index=1

No.	Title	Format of activities/ publications	Media	Date of release	link
D	Talkshow & Workshop				
1	Workshop on Synergy in Social Forestry: Realizing Justice in Land Management for Communities	Workshop in person (Manggala Wanabakti, Jakarta) and virtual	In person, Youtube and Zoom	June 2024	
2	Talkshow Strengthening the Implementation of Social Forestry Series 1: Strengthening Collaboration in IAD Implementation	Virtual talkshow	Zoom	July 2024	
3	Talkshow on Strengthening the Implementation of Social Forestry Series 2: Grounding Science, Advancing Social Forestry	Virtual talkshow	Youtube and Zoom	August 2024	
E	SSF Goes to Campus				
1	Audience with Mataram University	Audience at Mataram University	Youtube and Zoom	September 2024	
2	Talkshow on Strengthening the Implementation of Social Forestry Series 4: Strengthening the Role of Academics in Supporting Social Forestry	In-person talkshow (Mataram University) and virtual	Youtube and Zoom	September 2024	
F	Website Development				
	SSF Website Development	Upgrade the data and information system of the SSF project through the website	website		https://ssf-pskl.id/
G	Printing materials				

No.	Title	Format of activities/ publications	Media	Date of release	link
1	Profile of Social Forestry Groups in the SSF Locus Volume 1	Book	Printed & Digital Books		https://drive.google.com/file/d/1OxsP4MJboSQ5cKrycL_79rhV-mkD5UGD/view
2	Social Forestry Up Close	Book	Printed & Digital Books		https://drive.google.com/file/d/17CjFC0g0YP1976EDPSPzsnlQzX--46Dc/view
3	Forward March KUPS Berkah Jaya	Booklet	Printed & Digital Books		https://drive.google.com/file/d/1mDZnqGCLJaAH2z_q7TqrsRMCjwZn7teO/view
4	Filling Free Time by Producing Melinjo	Booklet	Printed & Digital Books		https://drive.google.com/file/d/1AN_w0g2tqS3ndetjgLR34Cxc0lplsWSZ/view
5	Project Brief	Booklet	Printed & Digital Books		https://drive.google.com/file/d/1WKU9AW2iyyEcaNZSxvN2qgwy6Gvvmq7e

Figure 1